

## Active Recombinant Human TDGF1 protein, His-tagged

Cat. No. TDGF1-572H Lot. No. (See product label)

### SPECIFICATION

<b>Product Overview</b>	Recombinant Human TDGF1 protein(P13385)(Met1-Asp150), fused with His tag, was expressed in HEK293.
<b>Species</b>	Human
<b>Source</b>	HEK293
<b>ProteinLength</b>	Met1-Asp150
<b>Form</b>	Lyophilized from 0.22 µm filtered solution in PBS, pH7.4.
<b>Bio-activity</b>	When Recombinant Human Cripto / His Protein is immobilized at 2g/mL (100 µ/well), the concentration of Anti Human Cripto Antibody(clone B3F6) that produces 50% of the optimal binding response is approximately 0.1 ug/ml.
<b>Molecular Mass</b>	The protein has a calculated MW of 15kDa.The reducing (R) heterodimer protein migrates as 20-35 kDa due to glycosylation
<b>Endotoxin</b>	<1EU/mg
<b>Purity</b>	SDS-PAGE>90%
<b>Storage</b>	Store at -20°C.
<b>Reconstitution</b>	sterile H31O

 Tel: 1-631-559-9269 1-516-512-3133

 Email: [info@creative-biomart.com](mailto:info@creative-biomart.com)  Fax: 1-631-938-8127

 45-1 Ramsey Road, Shirley, NY 11967, USA

## GENE INFORMATION

**Gene Name** TDGF1 teratocarcinoma-derived growth factor 1 [ Homo sapiens ]

**Official Symbol** TDGF1

**Synonyms** TDGF1; teratocarcinoma-derived growth factor 1; CR; CRIPTO; Cripto 1; cripto-1 growth factor; epidermal growth factor-like cripto protein CR1; CRGF;

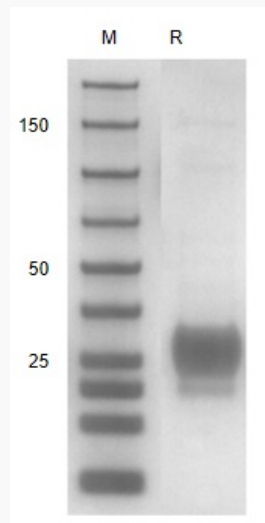
**Gene ID** 6997

**mRNA Refseq** NM\_001174136

**Protein Refseq** NP\_001167607

**UniProt ID** P13385

### SDS-PAGE

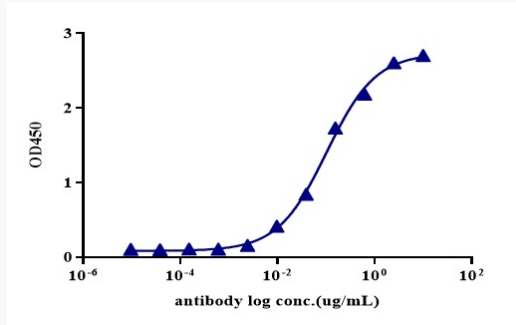


 Tel: 1-631-559-9269 1-516-512-3133

 Email: [info@creative-biomart.com](mailto:info@creative-biomart.com)  Fax: 1-631-938-8127

 45-1 Ramsey Road, Shirley, NY 11967, USA

ELISA



 Tel: 1-631-559-9269 1-516-512-3133

 Email: [info@creative-biomart.com](mailto:info@creative-biomart.com)  Fax: 1-631-938-8127

 45-1 Ramsey Road, Shirley, NY 11967, USA