

## Active Recombinant Human TDGF1 protein, hFc-tagged

Cat. No. TDGF1-573H Lot. No. (See product label)

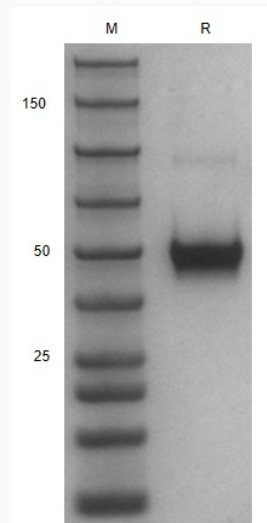
### SPECIFICATION

<b>Product Overview</b>	Recombinant Human TDGF1 protein(P13385)(Met1-Asp150), fused with hFc tag, was expressed in HEK293.
<b>Species</b>	Human
<b>Source</b>	HEK293
<b>ProteinLength</b>	Met1-Asp150
<b>Form</b>	Lyophilized from 0.22 µm filtered solution in PBS, pH7.4.
<b>Bio-activity</b>	When Recombinant Human Cripto/hFC Protein is immobilized at 2g/mL (100 µ/well), the concentration of Anti Human Cripto Antibody(clone B3F6) that produces 50% of the optimal binding response is approximately 90 ng/ml.
<b>Molecular Mass</b>	The protein has a calculated MW of 39kDa.The reducing (R) heterodimer protein migrates as 40-50 kDa due to glycosylation
<b>Endotoxin</b>	<1EU/mg
<b>Purity</b>	SDS-PAGE>90%,SEC-HPLC>95%
<b>Storage</b>	Store at -20°C.
<b>Reconstitution</b>	sterile H32O

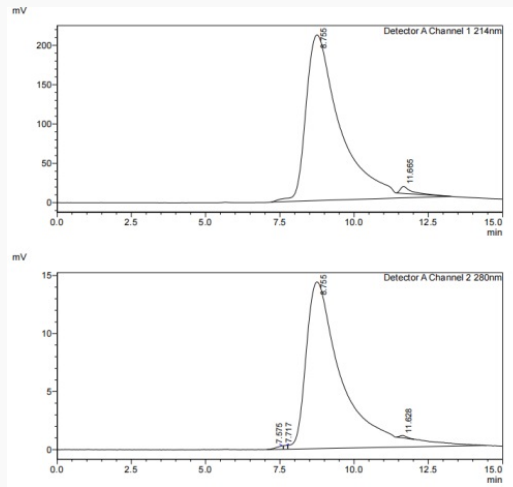
 Tel: 1-631-559-9269 1-516-512-3133

 Email: [info@creative-biomart.com](mailto:info@creative-biomart.com)  Fax: 1-631-938-8127

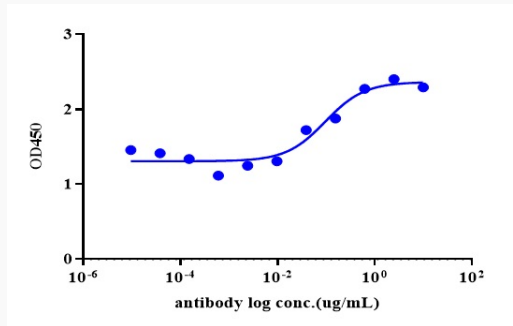
 45-1 Ramsey Road, Shirley, NY 11967, USA

**GENE INFORMATION****Gene Name** TDGF1 teratocarcinoma-derived growth factor 1 [ Homo sapiens ]**Official Symbol** TDGF1**Synonyms** TDGF1; teratocarcinoma-derived growth factor 1; CR; CRIPTO; Cripto 1; cripto-1 growth factor; epidermal growth factor-like cripto protein CR1; CRGF;**Gene ID** 6997**mRNA Refseq** NM\_001174136**Protein Refseq** NP\_001167607**UniProt ID** P13385**SDS-PAGE** Tel: 1-631-559-9269 1-516-512-3133 Email: [info@creative-biomart.com](mailto:info@creative-biomart.com)  Fax: 1-631-938-8127 45-1 Ramsey Road, Shirley, NY 11967, USA

**SDS-HPLC**



**ELISA**



Tel: 1-631-559-9269 1-516-512-3133

Email: [info@creative-biomart.com](mailto:info@creative-biomart.com) Fax: 1-631-938-8127

45-1 Ramsey Road, Shirley, NY 11967, USA