

Recombinant Human TDGF1 Protein (Leu31-Ser169), C-Fc tagged

Cat. No. TDGF1-6407H Lot. No. (See product label)

SPECIFICATION

Product Overview	Recombinant human TDGF1 (Leu31-Ser169) fused with the C-terminal Fc tag was expressed in mammalian cells.
Species	Human
Source	Mammalian Cells
ProteinLength	Leu31-Ser169
Form	Lyophilized powder/frozen liquid
Molecular Mass	40.4 kDa
Purity	> 90 % as determined by SDS-PAGE
Notes	For research use only.
Storage	Use a manual defrost freezer and avoid repeated freeze thaw cycles. Store at 2 to 8 centigrade for one week. Store at -20 to -80 centigrade for twelve months from the date of receipt.
Storage Buffer	Supplied as solution form in PBS or lyophilized from PBS.
Reconstitution	Reconstitute in sterile water for a stock solution.

 Tel: 1-631-559-9269 1-516-512-3133

 Email: info@creative-biomart.com  Fax: 1-631-938-8127

 45-1 Ramsey Road, Shirley, NY 11967, USA

Shipping

They are shipped out with dry ice/blue ice unless customers require otherwise.

GENE INFORMATION**Gene Name**

TDGF1 teratocarcinoma-derived growth factor 1 [Homo sapiens (human)]

Official Symbol

TDGF1

Synonyms

TDGF1; teratocarcinoma-derived growth factor 1; CR; CRIPTO; Cripto 1; cripto-1 growth factor; epidermal growth factor-like cripto protein CR1; CRGF;

Gene ID

6997

mRNA Refseq

NM_001174136

Protein Refseq

NP_001167607

MIM

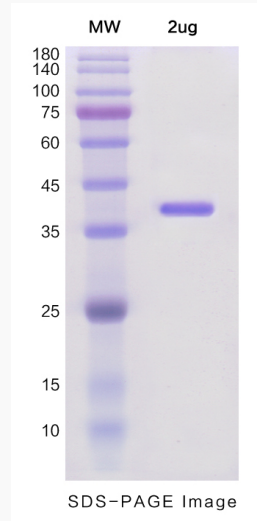
187395

UniProt ID

P13385

 Tel: 1-631-559-9269 1-516-512-3133 Email: info@creative-biomart.com  Fax: 1-631-938-8127 45-1 Ramsey Road, Shirley, NY 11967, USA

SDS-PAGE



 Tel: 1-631-559-9269 1-516-512-3133

 Email: info@creative-biomart.com  Fax: 1-631-938-8127

 45-1 Ramsey Road, Shirley, NY 11967, USA