

Recombinant Human TDP1 Protein, GST-tagged

Cat. No. TDP1-3325H **Lot. No.** (See product label)

SPECIFICATION

Product Overview	Recombinant Human TDP1 Protein (1-608 AA) is produced by Wheat Germ (in vitro) expression system. This protein is fused with a GST tag at the N-terminal.
Species	Human
Source	Wheat Germ
Protein Length	1-608 AA
Form	50 mM Tris-HCl, 10 mM reduced Glutathione, pH=8.0 in the elution buffer.
Molecular Mass	92.62 kDa
AA Sequence	<p>MSQEGDYGRWTISSSDESEEEKPKPKDPSTSSLLCARQGAANEPRYTCSEAQKAA HKRKISPVKFSNTDSVLPPKRQKSGSQEDLGWCLSSSDDELQPEMPQKQAEKVVIK KEKDISAPNDGTAQR TENHGAPACHRLKEEED EYETS GEGQDIWDM LDKGNPFQF YLTRVSGV KPKYNSGALHIKDILSPLFGTLVSSAQFN YCFDVDWL VKQYPPEFRKKPI LLVHGDKREAKAHLHAQAKPYENISLCQAKLDIAFGTHHTKMM LLLYEEGLRVVIHTS NLIHADWHQKTQGIWLSPLYPRIADGTHKSGESPTHFKADLISYLMAYNAPSLKEWID VIHKHDLSETNVYLIGSTPGRFQGSQKDNWGHFRLKLLKDHASSMPNAESWPVVG QFSSVGS LGADESKWLCSEFKESMLTLGKESKTPGKSSVPLYLIYPSVENVRTSLEG YPAGGSLPYSIQTAEKQNW LHSYFHKWSAETSGRSNAMPHIKTYMRPSPDFSKI AW FLVTSANLSKAAWGALEKNGTQLMIRSYELGV LFLPSAFGLDSFKVKQKFFAGSQEP MATFPVPYDLPELYGSKDRPWIWNIPYVKAPDTHGNMWVPS</p>

 Tel: 1-631-559-9269 1-516-512-3133

 Email: info@creative-biomart.com  Fax: 1-631-938-8127

 45-1 Ramsey Road, Shirley, NY 11967, USA

Applications Enzyme-linked Immunoabsorbent Assay; Western Blot (Recombinant protein); Antibody Production; Protein Array

Notes Best use within three months from the date of receipt of this protein.

Storage Store at -80 centigrade. Aliquot to avoid repeated freezing and thawing.

GENE INFORMATION

Gene Name TDP1 tyrosyl-DNA phosphodiesterase 1 [Homo sapiens]

Official Symbol TDP1

Synonyms TDP1; tyrosyl-DNA phosphodiesterase 1; FLJ11090; SCAN1; tyr-DNA phosphodiesterase 1; MGC104252;

Gene ID 55775

mRNA Refseq NM_001008744

Protein Refseq NP_001008744

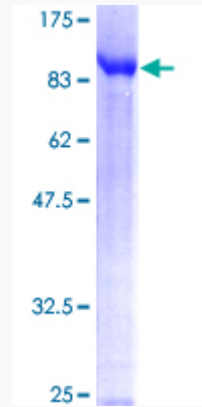
MIM 607198

UniProt ID Q9NUW8

 Tel: 1-631-559-9269 1-516-512-3133

 Email: info@creative-biomart.com  Fax: 1-631-938-8127

 45-1 Ramsey Road, Shirley, NY 11967, USA



12.5% SDS-PAGE Stained with Coomassie Blue.

Tel: 1-631-559-9269 1-516-512-3133

Email: info@creative-biomart.com Fax: 1-631-938-8127

45-1 Ramsey Road, Shirley, NY 11967, USA