

Recombinant Human TEAD4 protein, GST-tagged

Cat. No. TEAD4-3175H Lot. No. (See product label)

SPECIFICATION

| | |
|-------------------------|--|
| Product Overview | Recombinant Human TEAD4 protein(135-434 aa), fused with N-terminal GST tag, was expressed in E.coli. |
| Species | Human |
| Source | E.coli |
| ProteinLength | 135-434 aa |
| Form | The purified protein was lyophilized from sterile phosphate-buffered saline (PBS: 58 mM Na ₂ HPO ₄ , 17 mM NaH ₂ PO ₄ , 68 mM NaCl, pH 8.0). Prior to lyophilization, 5% (w/v) trehalose and 5% (w/v) mannitol were incorporated as cryoprotective excipients. The protein was eluted with a buffer containing 100 mM reduced glutathione (GSH). |
| AASequence | SAQIISATAFHSSMALARGPGRPAVSGFWQGALPGQAGTSHDVKPFSQQTYAVQP PLPLPGFESPAGPAPSPSAPPAPPWQGRSVASSKLWMLEFSAFLEQQQDPDTYNK HLFVHIGQSSPSYSDPYLEAVDIRQIYDKFPEKKGGLKDLFERGPSNAFFLVKFWADL NTNIEDEGSSFYGVSSQYESPENMIITCSTKVCSFGKQVVEKVETERYARYENGHYSY RIHRSPICEYMINFIHKLKHLPEKYMMNSVLENFTILQVVTNRDTQETLLCIAYVFEVS ASEHGAQHIIYRLVKE |
| Purity | 85%, by SDS-PAGE with Coomassie Brilliant Blue staining. |
| Storage | Store at 2-8°C for 1-2 weeks. Aliquot and store at -20°C to -80°C for up to 3 months, |

 Tel: 1-631-559-9269 1-516-512-3133

 Email: info@creative-biomart.com  Fax: 1-631-938-8127

 45-1 Ramsey Road, Shirley, NY 11967, USA

reconstitution with sterile water and addition of an equal volume of glycerol. Avoid repeat freeze-thaw cycles.

Reconstitution

Dissolve the product in 200 µl sterile water to achieve a working concentration of 0.25 g/µl. If experimental compatibility allows, mix the aqueous solution with an equal volume of glycerol (1:1 ratio) after initial reconstitution.

GENE INFORMATION

Gene Name [TEAD4 TEA domain family member 4 \[Homo sapiens \]](#)

Official Symbol [TEAD4](#)

Synonyms

TEAD4; TEA domain family member 4; TCF13L1; transcriptional enhancer factor TEF-3; EFTR 2; RTEF 1; TEF 3; TEFR 1; transcription factor RTEF-1; transcription factor 13-like 1; transcriptional enhancer factor 3; related transcription enhancer factor 1B; transcriptional enhancer factor 1-related; TEF3; RTEF1; TEF-3; EFTR-2; TEFR-1; hRTEF-1B; MGC9014;

Gene ID [7004](#)

mRNA Refseq [NM_003213](#)

Protein Refseq [NP_003204](#)

MIM [601714](#)

UniProt ID [Q15561](#)

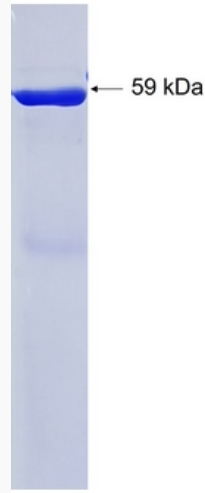
 Tel: 1-631-559-9269 1-516-512-3133

 Email: info@creative-biomart.com  Fax: 1-631-938-8127

 45-1 Ramsey Road, Shirley, NY 11967, USA



SDS-PAGE



☎ Tel: 1-631-559-9269 1-516-512-3133

☎ Email: info@creative-biomart.com ☎ Fax: 1-631-938-8127

☎ 45-1 Ramsey Road, Shirley, NY 11967, USA