

Active Recombinant Human TEK Protein, Fc/His-tagged

Cat. No. TEK-2054H Lot. No. (See product label)

SPECIFICATION

Product Overview	Active Recombinant Human TEK Protein(Met 1-Lys 745)(NP_000450.2) was expressed in HEK293, fused with the C-terminal polyhistidine-tagged Fc region of human IgG1 at the C-terminus.
Species	Human
Source	HEK293
ProteinLength	1-745 aa
Form	Lyophilized from sterile 100mM Glycine, 10mM NaCl, 50mM Tris, pH 7.5.
Bio-activity	Measured by its binding ability in a functional ELISA. Immobilized recombinant human Angiopoietin-2 at 10 µg/ml (100 µl/well) can bind Human Tie2 / Fc chimera with a range of 0.2-20 µg/ml.
Molecular Mass	The recombinant human Tie2/Fc is a disulfide-linked homodimeric protein. The reduced monomer consists of 970 amino acids and predicts a molecular mass of 108.5 kDa. As a result of glycosylation, the apparent molecular mass of rhTie2/Fc monomer is approximately 125-135 kDa in SDS-PAGE under reducing conditions.
Endotoxin	< 1.0 EU per µg of the protein as determined by the LAL method.
Purity	> 90 % as determined by SDS-PAGE

 Tel: 1-631-559-9269 1-516-512-3133

 Email: info@creative-biomart.com  Fax: 1-631-938-8127

 45-1 Ramsey Road, Shirley, NY 11967, USA

Storage Store it under sterile conditions at -20°C to -80°C upon receiving. Recommend to aliquot the protein into smaller quantities for optimal storage. Avoid repeated freeze-thaw cycles.

Reconstitution It is recommended that sterile water be added to the vial to prepare a stock solution of 0.2 ug/ul. Centrifuge the vial at 4°C before opening to recover the entire contents.

GENE INFORMATION

Gene Name [TEK TEK tyrosine kinase, endothelial \[Homo sapiens \]](#)

Official Symbol [TEK](#)

Synonyms TEK; TEK tyrosine kinase, endothelial; venous malformations, multiple cutaneous and mucosal , VMCM; angiopoietin-1 receptor; CD202b; TIE 2; TIE2; VMCM1; hTIE2; p140 TEK; soluble TIE2 variant 1; soluble TIE2 variant 2; endothelial tyrosine kinase; tyrosine-protein kinase receptor TEK; tunica interna endothelial cell kinase; tyrosine-protein kinase receptor TIE-2; tyrosine kinase with Ig and EGF homology domains-2; VMCM; TIE-2; CD202B;

Gene ID [7010](#)

mRNA Refseq [NM_000459](#)

Protein Refseq [NP_000450](#)

MIM [600221](#)

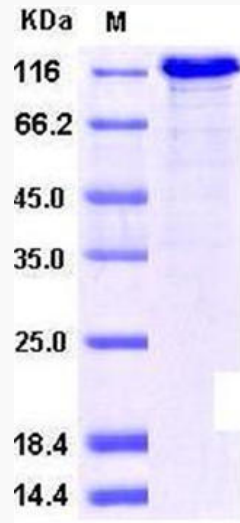
UniProt ID [Q02763](#)

 Tel: 1-631-559-9269 1-516-512-3133

 Email: info@creative-biomart.com  Fax: 1-631-938-8127

 45-1 Ramsey Road, Shirley, NY 11967, USA

SDS-PAGE



 Tel: 1-631-559-9269 1-516-512-3133

 Email: info@creative-biomart.com  Fax: 1-631-938-8127

 45-1 Ramsey Road, Shirley, NY 11967, USA