

Active Recombinant Human TEK protein

Cat. No. TEK-2595H Lot. No. (See product label)

SPECIFICATION

Product Overview	Active Recombinant Human TIE2/TEK/CD202b Protein is produced by insect cell-baculovirus expression system. The target protein is expressed with sequence (Lys808-Ala1124) of human hTIE2 (Accession #NP_000450.2).
Species	Human
Source	Sf9 Cells
ProteinLength	Lys808-Ala1124
Form	Lyophilized from a 0.22 µm filtered solution of PBS, pH 7.4.
Bio-activity	Measured by its binding ability in a functional ELISA. Immobilized Human TEK Protein at 2 µg/mL (100 µL/well) can bind ANG2 with a linear range of 39-7090 ng/mL.
Molecular Mass	35 kDa
Endotoxin	< 1.0 EU/µg of the protein by LAL method.
Purity	> 97% by SDS-PAGE.
Storage	Store the lyophilized protein at -20°C to -80 °C for long term. After reconstitution, the protein solution is stable at -20 °C for 3 months, at 2-8 °C for up to 1 week.

 Tel: 1-631-559-9269 1-516-512-3133

 Email: info@creative-biomart.com  Fax: 1-631-938-8127

 45-1 Ramsey Road, Shirley, NY 11967, USA

Reconstitution Reconstitute to a concentration of 0.1-0.5 mg/mL in sterile distilled water.

GENE INFORMATION

Gene Name TEK TEK tyrosine kinase, endothelial [Homo sapiens]

Official Symbol TEK

Synonyms TEK; TEK tyrosine kinase, endothelial; venous malformations, multiple cutaneous and mucosal , VMCM; angiopoietin-1 receptor; CD202b; TIE 2; TIE2; VMCM1; hTIE2; p140 TEK; soluble TIE2 variant 1; soluble TIE2 variant 2; endothelial tyrosine kinase; tyrosine-protein kinase receptor TEK; tunica interna endothelial cell kinase; tyrosine-protein kinase receptor TIE-2; tyrosine kinase with Ig and EGF homology domains-2; VMCM; TIE-2; CD202B;

Gene ID 7010

mRNA Refseq NM_000459

Protein Refseq NP_000450

MIM 600221

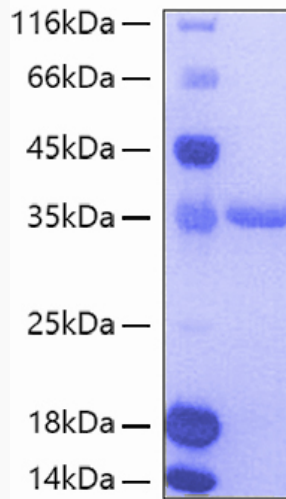
UniProt ID Q02763

 Tel: 1-631-559-9269 1-516-512-3133

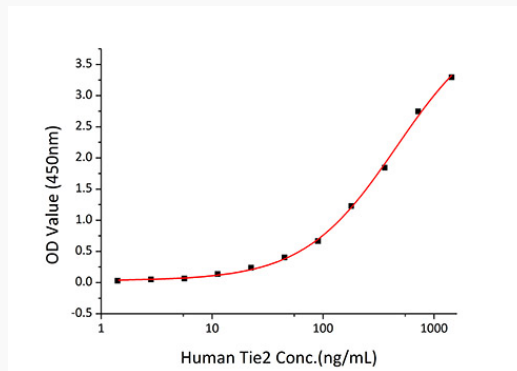
 Email: info@creative-biomart.com  Fax: 1-631-938-8127

 45-1 Ramsey Road, Shirley, NY 11967, USA

SDS-PAGE



Bio-activity



 Tel: 1-631-559-9269 1-516-512-3133

 Email: info@creative-biomart.com  Fax: 1-631-938-8127

 45-1 Ramsey Road, Shirley, NY 11967, USA