

Recombinant Human TEK Protein (Met1-Lys745), C-His tagged

Cat. No. TEK-5126H Lot. No. (See product label)

SPECIFICATION

| | |
|-------------------------|---|
| Product Overview | Recombinant human TEK (Met1-Lys745) fused with the C-terminal His tag was expressed in Mammalian cells. |
| Species | Human |
| Source | Mammalian Cells |
| ProteinLength | Met1-Lys745 |
| Form | Lyophilized powder/frozen liquid |
| Molecular Mass | 81.95 kDa |
| Endotoxin | < 1.0 EU/μg of the protein as determined by the LAL method. |
| Purity | >90% as determined by SDS-PAGE. |
| Notes | For research use only. |
| Storage | Use a manual defrost freezer and avoid repeated freeze thaw cycles. Store at 2 to 8 centigrade for one week. Store at -20 to -80 centigrade for twelve months from the date of receipt. |
| Storage Buffer | Supplied as solution form in PBS or lyophilized from PBS. |

 Tel: 1-631-559-9269 1-516-512-3133

 Email: info@creative-biomart.com  Fax: 1-631-938-8127

 45-1 Ramsey Road, Shirley, NY 11967, USA

Reconstitution Reconstitute in sterile water for a stock solution.

Shipping They are shipped out with dry ice/blue ice unless customers require otherwise.

GENE INFORMATION

Gene Name [TEK](#) [TEK tyrosine kinase, endothelial \[Homo sapiens \(human\) \]](#)

Official Symbol [TEK](#)

Synonyms

TEK; TEK tyrosine kinase, endothelial; venous malformations, multiple cutaneous and mucosal, VMCM; angiotensin-1 receptor; CD202b; TIE 2; TIE2; VMCM1; hTIE2; p140 TEK; soluble TIE2 variant 1; soluble TIE2 variant 2; endothelial tyrosine kinase; tyrosine-protein kinase receptor TEK; tunica interna endothelial cell kinase; tyrosine-protein kinase receptor TIE-2; tyrosine kinase with Ig and EGF homology domains-2; VMCM; TIE-2; CD202B;

Gene ID [7010](#)

mRNA Refseq [NM_000459](#)

Protein Refseq [NP_000450](#)

MIM [600221](#)

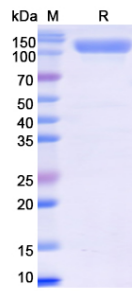
UniProt ID [Q02763](#)

 Tel: 1-631-559-9269 1-516-512-3133

 Email: info@creative-biomart.com  Fax: 1-631-938-8127

 45-1 Ramsey Road, Shirley, NY 11967, USA

SDS-PAGE



 Tel: 1-631-559-9269 1-516-512-3133

 Email: info@creative-biomart.com  Fax: 1-631-938-8127

 45-1 Ramsey Road, Shirley, NY 11967, USA