

# Recombinant Human TEKT2 Protein, Myc/DDK-tagged, C13 and N15-labeled

Cat. No. TEKT2-4740H Lot. No. (See product label)

## SPECIFICATION

### Product Overview

TEKT2 MS Standard C13 and N15-labeled recombinant protein (NP\_055281) with a C-terminal MYC/DDK tag, was expressed in HEK293 cells.

### Species

Human

### Source

HEK293

### Description

This gene product belongs to the tektin family of proteins. Tektins comprise a family of filament-forming proteins that are coassembled with tubulins to form ciliary and flagellar microtubules. This gene is expressed in the testis and its protein is localized to the flagella of the sperms, indicating that it may play a role in spermatogenesis.

### Molecular Mass

49.7 kDa

### AA Sequence

MATLSVKPSRRFQLPDWHTNSYLLSTNAQLQRDASHQIRQEARVLRNETNNQTIWD  
 EHDNRTRLVERIDTVNRWKEMLDKCLTDLDAEIDALTQMKESAEQNLQAKNLPLDVA  
 IECLTLRESRRDIDVVKDPVEDELHKEVEVIEATKKALQQKVSQAFEQLCLLQEVQQQ  
 LNSDHRGKMETLEIDRGCLSLNLRSPNISLKVDPTRVPDGGSTTLQQWDDFSRFNKD  
 RAEAEMKAATELREATAITIAETNNELEAQRVATEFAFRKRLREMEKVYSELKWQEK  
 NTLEEIAELQEDIRHLEEDLRTKLLSLKLSHTRLEARTYRPNVELCRDQAQYGLTDEV  
 HQLEATIAALKQKLAQAQDALDALCKHLARLQADIACKANSMLLDTKCMDTRRKLTV  
 PAERFVPEVDTFTRTTNSTLSPLKSCQLELATRTRPLEQKLISEEDLAANDILDYKDD  
 DDKV

 Tel: 1-631-559-9269 1-516-512-3133

 Email: [info@creative-biomart.com](mailto:info@creative-biomart.com)  Fax: 1-631-938-8127

 45-1 Ramsey Road, Shirley, NY 11967, USA

<b>Purity</b>	> 80% as determined by SDS-PAGE and Coomassie blue staining
<b>Stability</b>	Stable for 3 months from receipt of products under proper storage and handling conditions.
<b>Storage</b>	Store at -80 centigrade. Avoid repeated freeze-thaw cycles.
<b>Concentration</b>	50 µg/mL as determined by BCA
<b>Storage Buffer</b>	100 mM glycine, 25 mM Tris-HCl, pH 7.3.

## GENE INFORMATION

<b>Gene Name</b>	TEKT2 tektin 2 [ Homo sapiens (human) ]
<b>Official Symbol</b>	TEKT2
<b>Synonyms</b>	TEKT2; tektin 2 (testicular); tektin-2; TEKTB1; tektin-B1; testicular tektin B1-like protein; TEKTIN-T; h-tektin-t;
<b>Gene ID</b>	27285
<b>mRNA Refseq</b>	NM_014466
<b>Protein Refseq</b>	NP_055281
<b>MIM</b>	608953
<b>UniProt ID</b>	Q9UIF3

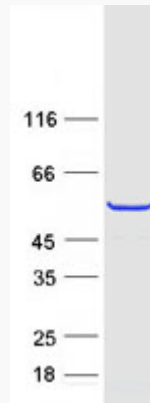
 Tel: 1-631-559-9269 1-516-512-3133

 Email: [info@creative-biomart.com](mailto:info@creative-biomart.com)  Fax: 1-631-938-8127

 45-1 Ramsey Road, Shirley, NY 11967, USA



**SDS-PAGE**



Tel: 1-631-559-9269 1-516-512-3133

Email: [info@creative-biomart.com](mailto:info@creative-biomart.com) Fax: 1-631-938-8127

45-1 Ramsey Road, Shirley, NY 11967, USA