

# Recombinant Human TELO2 Protein, Myc/DDK-tagged, C13 and N15-labeled

Cat. No. TELO2-6284H Lot. No. (See product label)

## SPECIFICATION

### Product Overview

TELO2 MS Standard C13 and N15-labeled recombinant protein (NP\_057195) with a C-terminal MYC/DDK tag, was expressed in HEK293 cells.

### Species

Human

### Source

HEK293

### Description

This gene encodes a protein that functions as an S-phase checkpoint protein in the cell cycle. The protein may also play a role in DNA repair.

### Molecular Mass

91.8 kDa

### AA Sequence

MEPAPSEVRLAVREAIHALSSSEDGGHIFCTLESLKRYLGEMEPPALPREKEEFASA  
 HFSPVLRCLASRLSPAWLELLPHGRLEELWASFFLEGPADQAFVLVLMETIEGAAGPS  
 FRLMKMARLLARFLREGRLAVLMEAQCRQQTRPGFILLRETLGKVVALPDHLGNRL  
 QQENLAEFFPQNYFRLLGEEVVRVLQAVVDSLQGGLDSSVSFVSQVLGKACVHGR  
 QQEILGVLVPRLAALTQGSYLHQRVCWRLVEQVPDRAMEAVLTGLVEAALGPEVLS  
 RLLGNLVVKNKKAQFVMTQKLLFLQSRLTTPMLQSLLGHLAMDSQRRPLLLQVLKEL  
 LETWGSSSAIRHTPLPQQRHVSKAVLICLAQLGEPELRDSRDELLASMMAGVKCRL  
 DSSLPPVRRRLGMIVAEVVSARIHPEGPPLKFQYEEDELSLELLALASPQPAGDGASE  
 AGTSLVPATAEPPAETPAEIVDGGVPQAQLAGSDSDLSDDEFVPHYMSGDRELKS  
 SKAPAYVRDCVEALTTSEDIERWEAALRALEGLVYRSPTATREVSVELAKVLLHLEE  
 KTCVVGFAGLRQRALVAVTVTDPAPVADYLT SQFYALNYSRQRMDILDVLT LAAQE

 Tel: 1-631-559-9269 1-516-512-3133

 Email: [info@creative-biomart.com](mailto:info@creative-biomart.com)  Fax: 1-631-938-8127

 45-1 Ramsey Road, Shirley, NY 11967, USA

LSRPGCLGRTPQPGSPSPNTPCLPEAAVSQPGSAVASDWRVVVEERIRSKTQRLSK  
 GGPRQGPAGSPSRFNSVAGHFFFLLQRFDRPLVTFDLLGEDQLVLGRLAHTLGAL  
 MCLAVNTTVAVAMGKALLEFVWALRFHIDAYVRQGLLSAVSSVLLSLPAARLLEDLM  
 DELLEARSWLADVAEKDPDEDCRTLALRALLLQRLKNRLLPPASPTRTRPLEQKLIS  
 EEDLAANDILDYKDDDDKV

**Purity** > 80% as determined by SDS-PAGE and Coomassie blue staining

**Stability** Stable for 3 months from receipt of products under proper storage and handling conditions.

**Storage** Store at -80 centigrade. Avoid repeated freeze-thaw cycles.

**Concentration** 50 µg/mL as determined by BCA

**Storage Buffer** 100 mM glycine, 25 mM Tris-HCl, pH 7.3.

## GENE INFORMATION

**Gene Name** [TELO2 telomere maintenance 2 \[ Homo sapiens \(human\) \]](#)

**Official Symbol** [TELO2](#)

**Synonyms** TELO2; telomere maintenance 2; CLK2; TEL2; YHFS; telomere length regulation protein TEL2 homolog; TEL2, telomere maintenance 2, homolog; protein clk-2 homolog

**Gene ID** [9894](#)

**mRNA Refseq** [NM\\_016111](#)

 Tel: 1-631-559-9269 1-516-512-3133

 Email: [info@creative-biomart.com](mailto:info@creative-biomart.com)  Fax: 1-631-938-8127

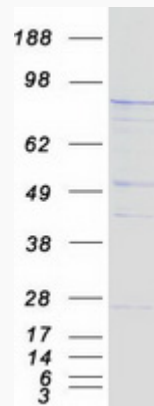
 45-1 Ramsey Road, Shirley, NY 11967, USA

**Protein Refseq** NP\_057195

**MIM** 611140

**UniProt ID** Q9Y4R8

**SDS-PAGE**



 Tel: 1-631-559-9269 1-516-512-3133

 Email: [info@creative-biomart.com](mailto:info@creative-biomart.com)  Fax: 1-631-938-8127

 45-1 Ramsey Road, Shirley, NY 11967, USA