

Recombinant Human TEP1 protein, His & T7-tagged

Cat. No. TEP1-2804H Lot. No. (See product label)

SPECIFICATION

Product Overview	Recombinant Human TEP1 aa. (Glu2368~Glu2627 (Accession # Q99973)) fused with N-terminal His & T7 tag was produced in E. coli cells.
Species	Human
Source	E.coli
ProteinLength	Glu2368~Glu2627
Description	This gene product is a component of the ribonucleoprotein complex responsible for telomerase activity which catalyzes the addition of new telomeres on the chromosome ends. The telomerase-associated proteins are conserved from ciliates to humans. Alternative splicing results in multiple transcript variants.
Form	Freeze-dried powder
Molecular Mass	Predicted Molecular Mass: 32.7kDa
Endotoxin	<1.0EU per 1g (determined by the LAL method)
Purity	>95%
Characteristic	The isoelectric point is 5.4.
Applications	SDS-PAGE; WB; ELISA; IP.

 Tel: 1-631-559-9269 1-516-512-3133

 Email: info@creative-biomart.com  Fax: 1-631-938-8127

 45-1 Ramsey Road, Shirley, NY 11967, USA

Stability	The thermal stability is described by the loss rate. The loss rate was determined by accelerated thermal degradation test, that is, incubate the protein at 37°C for 48h, and no obvious degradation and precipitation were observed. The loss rate is less than 5% within the expiration date under appropriate storage condition.
Storage	Avoid repeated freeze/thaw cycles. Store at 2-8°C for one month. Aliquot and store at -80°C for 12 months.
Storage buffer	Supplied as lyophilized form in PBS, pH7.4, containing 5% trehalose, 0.01% sarcosyl.
Reconstitution	Reconstitute in sterile PBS, pH7.2-pH7.4.

GENE INFORMATION

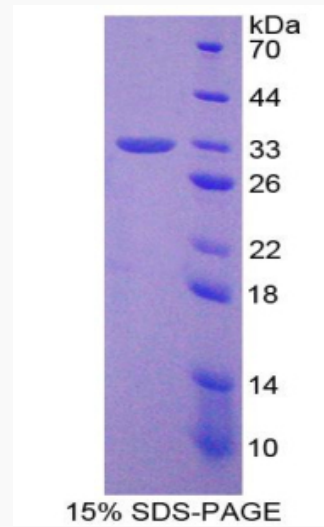
Gene Name	TEP1 telomerase associated protein 1 [Homo sapiens (human)]
Official Symbol	TEP1
Synonyms	TP1; TLP1; p240; TROVE1; VAULT2; TROVE domain family, member 1; p80 telomerase homolog; telomerase protein 1
Gene ID	7011
mRNA Refseq	NM_001319035.1
Protein Refseq	NP_001305964.1
UniProt ID	Q99973

 Tel: 1-631-559-9269 1-516-512-3133

 Email: info@creative-biomart.com  Fax: 1-631-938-8127

 45-1 Ramsey Road, Shirley, NY 11967, USA

SDS-PAGE



 Tel: 1-631-559-9269 1-516-512-3133

 Email: info@creative-biomart.com  Fax: 1-631-938-8127

 45-1 Ramsey Road, Shirley, NY 11967, USA