

Recombinant Human TEP1 protein, His-tagged

Cat. No. TEP1-5324H Lot. No. (See product label)

SPECIFICATION

Product Overview	Recombinant Human TEP1 protein(Q99973)(2392-2594aa), fused to N-terminal His tag, was expressed in E. coli.
Species	Human
Source	E.coli
ProteinLength	2392-2594aa
Form	If the delivery form is liquid, the default storage buffer is Tris/PBS-based buffer, 5%-50% glycerol. If the delivery form is lyophilized powder, the buffer before lyophilization is Tris/PBS-based buffer, 6% Trehalose, pH 8.0.
Molecular Mass	26.8 kDa
Purity	Greater than 90% as determined by SDS-PAGE.
Storage	Store at -20°C/-80°C upon receipt, aliquoting is necessary for mutiple use. Avoid repeated freeze-thaw cycles.
Reconstitution	Please reconstitute protein in deionized sterile water to a concentration of 0.1-1.0 mg/mL. We recommend to add 5-50% of glycerol (final concentration) and aliquot for long-term storage at -20°C/-80°C. Our default final concentration of glycerol is 50%.

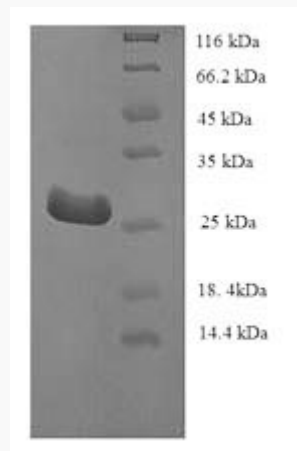
GENE INFORMATION

 Tel: 1-631-559-9269 1-516-512-3133

 Email: info@creative-biomart.com  Fax: 1-631-938-8127

 45-1 Ramsey Road, Shirley, NY 11967, USA

Gene Name	TEP1 telomerase-associated protein 1 [Homo sapiens]
Official Symbol	TEP1
Synonyms	TEP1; telomerase-associated protein 1; telomerase protein component 1; p240; TLP1; TP1; TROVE domain family; member 1; TROVE1; VAULT2; telomerase protein 1; p80 telomerase homolog; TROVE domain family, member 1;
Gene ID	7011
mRNA Refseq	NM_007110
Protein Refseq	NP_009041
MIM	601686
UniProt ID	Q99973

SDS-PAGE


 Tel: 1-631-559-9269 1-516-512-3133

 Email: info@creative-biomart.com  Fax: 1-631-938-8127

 45-1 Ramsey Road, Shirley, NY 11967, USA