

Recombinant Human TEP1 Protein (Glu2368-Glu2627), N-His tagged

Cat. No. TEP1-6409H Lot. No. (See product label)

SPECIFICATION

Product Overview	Recombinant human TEP1 (Glu2368-Glu2627) fused with the N-His tag was expressed in E. coli.
Species	Human
Source	E.coli
ProteinLength	Glu2368-Glu2627
Form	Lyophilized powder/frozen liquid
Molecular Mass	31.23 kDa
Purity	> 90 % as determined by SDS-PAGE
Notes	For research use only.
Storage	Use a manual defrost freezer and avoid repeated freeze thaw cycles. Store at 2 to 8 centigrade for one week. Store at -20 to -80 centigrade for twelve months from the date of receipt.
Storage Buffer	0.01M PBS, pH 7.4, 0.02 % NLS
Reconstitution	Reconstitute in sterile water for a stock solution.

 Tel: 1-631-559-9269 1-516-512-3133

 Email: info@creative-biomart.com  Fax: 1-631-938-8127

 45-1 Ramsey Road, Shirley, NY 11967, USA

Shipping They are shipped out with dry ice/blue ice unless customers require otherwise.

GENE INFORMATION

Gene Name TEP1 telomerase-associated protein 1 [Homo sapiens (human)]

Official Symbol TEP1

Synonyms TEP1; telomerase-associated protein 1; telomerase protein component 1; p240; TLP1; TP1; TROVE domain family; member 1; TROVE1; VAULT2; telomerase protein 1; p80 telomerase homolog; TROVE domain family, member 1;

Gene ID 7011

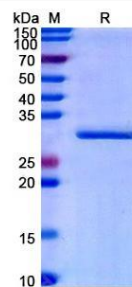
mRNA Refseq NM_007110

Protein Refseq NP_009041

MIM 601686

UniProt ID Q99973

SDS-PAGE



 Tel: 1-631-559-9269 1-516-512-3133

 Email: info@creative-biomart.com  Fax: 1-631-938-8127

 45-1 Ramsey Road, Shirley, NY 11967, USA