

Recombinant Human TERF1 Protein, His-GST-tagged

Cat. No. TERF1-001H Lot. No. (See product label)

SPECIFICATION

Product Overview	Recombinant Human TERF1 Protein (1-419 aa (full-length)) with 6xHis-GST tags was expressed in E. coli.
Species	Human
Source	E.coli
ProteinLength	1-419
Description	This gene encodes a telomere specific protein which is a component of the telomere nucleoprotein complex. This protein is present at telomeres throughout the cell cycle and functions as an inhibitor of telomerase, acting in cis to limit the elongation of individual chromosome ends. The protein structure contains a C-terminal Myb motif, a dimerization domain near its N-terminus and an acidic N-terminus. Two transcripts of this gene are alternatively spliced products.
Molecular Mass	77.2 kDa
Purity	>85% confirmed by 10% SDS-PAGE stained with Coomassie Blue (CB), immunoblotting with anti-6xHis (WB).
Applications	ELISA, Western Blot, Antibody Production, Protein array
Storage	Store working aliquots at 4 centigrade for up to one week. For extended storage, conserve at -80 centigrade.

 Tel: 1-631-559-9269 1-516-512-3133

 Email: info@creative-biomart.com  Fax: 1-631-938-8127

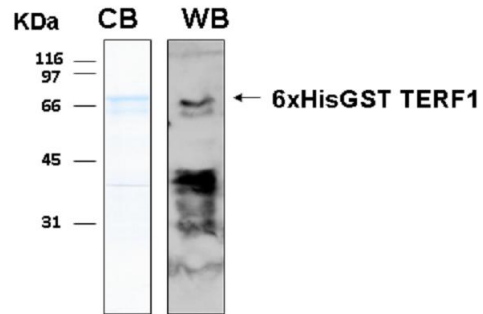
 45-1 Ramsey Road, Shirley, NY 11967, USA

Expiry	12 months from the date of purchase, if it is properly stored.
Storage Buffer	20mM Tris-HCl, 0.5M NaCl, 100mM imidazole, pH: 8.0. No preservatives added.
Shipping	Dry Ice
GENE INFORMATION	
Gene Name	TERF1 telomeric repeat binding factor 1 [Homo sapiens (human)]
Official Symbol	TERF1
Synonyms	TERF1; telomeric repeat binding factor 1; TRF; PIN2; TRF1; TRBF1; t-TRF1; hTRF1-AS; telomeric repeat-binding factor 1; NIMA-interacting protein 2; TTAGGG repeat-binding factor 1; telomeric protein Pin2/TRF1; telomeric repeat binding factor (NIMA-interacting) 1
Gene ID	7013
mRNA Refseq	NM_003218
Protein Refseq	NP_003209
MIM	600951
UniProt ID	P54274

 Tel: 1-631-559-9269 1-516-512-3133

 Email: info@creative-biomart.com  Fax: 1-631-938-8127

 45-1 Ramsey Road, Shirley, NY 11967, USA



 Tel: 1-631-559-9269 1-516-512-3133

 Email: info@creative-biomart.com  Fax: 1-631-938-8127

 45-1 Ramsey Road, Shirley, NY 11967, USA