

## Recombinant Human TERF1 Protein, His-tagged

**Cat. No.** TERF1-002H    **Lot. No.** (See product label)

### SPECIFICATION

<b>Product Overview</b>	Recombinant Human TERF1 Protein (1-419 aa (full-length)) with 6xHis tag was expressed in E. coli.
<b>Species</b>	Human
<b>Source</b>	E.coli
<b>ProteinLength</b>	1-419
<b>Description</b>	This gene encodes a telomere specific protein which is a component of the telomere nucleoprotein complex. This protein is present at telomeres throughout the cell cycle and functions as an inhibitor of telomerase, acting in cis to limit the elongation of individual chromosome ends. The protein structure contains a C-terminal Myb motif, a dimerization domain near its N-terminus and an acidic N-terminus. Two transcripts of this gene are alternatively spliced products.
<b>Molecular Mass</b>	51.3 kDa
<b>Purity</b>	>95% confirmed by 10% SDS-PAGE stained with Coomassie Blue (CB), immunoblotting with anti-6xHis (WB).
<b>Applications</b>	ELISA, Western Blot, Antibody Production, Protein array
<b>Storage</b>	Store working aliquots at 4 centigrade for up to one week. For extended storage, conserve at -80 centigrade.

 Tel: 1-631-559-9269    1-516-512-3133

 Email: [info@creative-biomart.com](mailto:info@creative-biomart.com)     Fax: 1-631-938-8127

 45-1 Ramsey Road, Shirley, NY 11967, USA

<b>Expiry</b>	12 months from the date of purchase, if it is properly stored.
<b>Storage Buffer</b>	Phosphate-Buffered Saline (PBS), pH 7.4. No preservatives added.
<b>Shipping</b>	Dry Ice

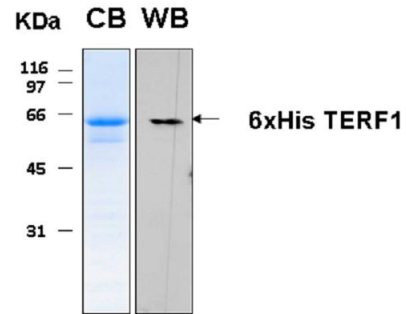
## GENE INFORMATION

<b>Gene Name</b>	TERF1 telomeric repeat binding factor 1 [ Homo sapiens (human) ]
<b>Official Symbol</b>	TERF1
<b>Synonyms</b>	TERF1; telomeric repeat binding factor 1; TRF; PIN2; TRF1; TRBF1; t-TRF1; hTRF1-AS; telomeric repeat-binding factor 1; NIMA-interacting protein 2; TTAGGG repeat-binding factor 1; telomeric protein Pin2/TRF1; telomeric repeat binding factor (NIMA-interacting) 1
<b>Gene ID</b>	7013
<b>mRNA Refseq</b>	NM_003218
<b>Protein Refseq</b>	NP_003209
<b>MIM</b>	600951
<b>UniProt ID</b>	P54274

 Tel: 1-631-559-9269 1-516-512-3133

 Email: [info@creative-biomart.com](mailto:info@creative-biomart.com)  Fax: 1-631-938-8127

 45-1 Ramsey Road, Shirley, NY 11967, USA



Tel: 1-631-559-9269 1-516-512-3133

Email: [info@creative-biomart.com](mailto:info@creative-biomart.com) Fax: 1-631-938-8127

45-1 Ramsey Road, Shirley, NY 11967, USA