

# Recombinant Human TERF1 Protein (Ile148-Lys428), N-GST tagged

Cat. No. TERF1-6410H Lot. No. (See product label)

## SPECIFICATION

<b>Product Overview</b>	Recombinant human TERF1 (Ile148-Lys428) fused with the N-GST tag was expressed in E. coli.
<b>Species</b>	Human
<b>Source</b>	E.coli
<b>ProteinLength</b>	Ile148-Lys428
<b>Form</b>	Lyophilized powder/frozen liquid
<b>Molecular Mass</b>	59.56 kDa
<b>Purity</b>	> 90 % as determined by SDS-PAGE
<b>Notes</b>	For research use only.
<b>Storage</b>	Use a manual defrost freezer and avoid repeated freeze thaw cycles. Store at 2 to 8 centigrade for one week. Store at -20 to -80 centigrade for twelve months from the date of receipt.
<b>Storage Buffer</b>	0.01M PBS, pH 7.4, 0.02 % NLS
<b>Reconstitution</b>	Reconstitute in sterile water for a stock solution.

 Tel: 1-631-559-9269 1-516-512-3133

 Email: [info@creative-biomart.com](mailto:info@creative-biomart.com)  Fax: 1-631-938-8127

 45-1 Ramsey Road, Shirley, NY 11967, USA

**Shipping** They are shipped out with dry ice/blue ice unless customers require otherwise.

## GENE INFORMATION

**Gene Name** TERF1 telomeric repeat binding factor (NIMA-interacting) 1 [ Homo sapiens (human) ]

**Official Symbol** TERF1

**Synonyms** TERF1; telomeric repeat binding factor (NIMA-interacting) 1; TRBF1; telomeric repeat-binding factor 1; PIN2; TRF; TRF1; NIMA-interacting protein 2; telomeric protein Pin2/TRF1; TTAGGG repeat-binding factor 1; t-TRF1; hTRF1-AS; FLJ41416;

**Gene ID** 7013

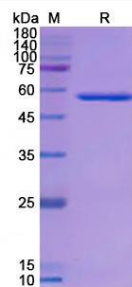
**mRNA Refseq** NM\_003218

**Protein Refseq** NP\_003209

**MIM** 600951

**UniProt ID** P54274

## SDS-PAGE



 Tel: 1-631-559-9269 1-516-512-3133

 Email: [info@creative-biomart.com](mailto:info@creative-biomart.com)  Fax: 1-631-938-8127

 45-1 Ramsey Road, Shirley, NY 11967, USA