

## Recombinant Human TERT protein, GST-tagged

**Cat. No.** TERT-5743H    **Lot. No.** (See product label)

### SPECIFICATION

<b>Product Overview</b>	Recombinant Human TERT protein(219-320 aa), fused with N-terminal GST tag, was expressed in E. coli.
<b>Species</b>	Human
<b>Source</b>	E. coli
<b>ProteinLength</b>	219-320 aa
<b>Form</b>	The purified protein was lyophilized from sterile phosphate-buffered saline (PBS: 58 mM Na <sub>2</sub> HPO <sub>4</sub> , 17 mM NaH <sub>2</sub> PO <sub>4</sub> , 68 mM NaCl, pH 8.0). Prior to lyophilization, 5% (w/v) trehalose and 5% (w/v) mannitol were incorporated as cryoprotective excipients. The protein was eluted with a buffer containing 100 mM reduced glutathione (GSH).
<b>AASequence</b>	MPGARRRGGASASRSLPLPKRPRRGAAPEPERTPVGQGSWAHPGRTRGPSDRGFC VVSPARPAEEATSLEGALSGTRHSHPSVGRQHHAGPPSTSRPPRPWDTP
<b>Purity</b>	85%, by SDS-PAGE.
<b>Storage</b>	Store at 2-8°C for 1-2 weeks. Aliquot and store at -20°C to -80°C for up to 3 months, reconstitution with sterile water and addition of an equal volume of glycerol. Avoid repeat freeze-thaw cycles.
<b>Reconstitution</b>	It is recommended that sterile water be added to the vial to prepare a stock solution of

 Tel: 1-631-559-9269    1-516-512-3133

 Email: [info@creative-biomart.com](mailto:info@creative-biomart.com)     Fax: 1-631-938-8127

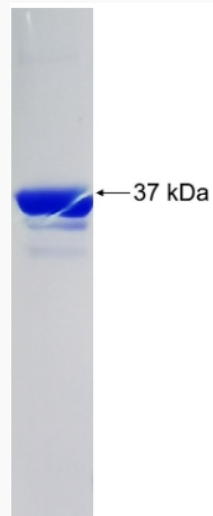
 45-1 Ramsey Road, Shirley, NY 11967, USA

0.25 ug/ul. Centrifuge the vial at 4°C before opening to recover the entire contents.

## GENE INFORMATION

<b>Gene Name</b>	TERT telomerase reverse transcriptase [ Homo sapiens ]
<b>Official Symbol</b>	TERT
<b>Synonyms</b>	TERT; telomerase reverse transcriptase; EST2; hEST2; TCS1; TP2; TRT; telomerase catalytic subunit; telomerase-associated protein 2; hTRT; DKCA2; DKCB4;
<b>mRNA Refseq</b>	NM_001193376
<b>Protein Refseq</b>	NP_001180305
<b>UniProt ID</b>	O14746
<b>Gene ID</b>	7015

## SDS-PAGE



 Tel: 1-631-559-9269 1-516-512-3133

 Email: [info@creative-biomart.com](mailto:info@creative-biomart.com)  Fax: 1-631-938-8127

 45-1 Ramsey Road, Shirley, NY 11967, USA