

## Recombinant Human TES Protein (Met1-Ser421), C-His tagged

Cat. No. TES-5797H Lot. No. (See product label)

### SPECIFICATION

|                         |   |
|-------------------------|---|
| <b>Product Overview</b> | Recombinant human TES (Met1-Ser421) fused with the C-terminal His tag was expressed in E. coli.   |
| <b>Species</b>          | Human   |
| <b>Source</b>           | E.coli  |
| <b>ProteinLength</b>    | Met1-Ser421   |
| <b>Form</b>             | Lyophilized powder/frozen liquid  |
| <b>Molecular Mass</b>   | 46.31 kDa   |
| <b>Purity</b>           | > 90 % as determined by SDS-PAGE  |
| <b>Notes</b>            | For research use only.  |
| <b>Storage</b>          | Use a manual defrost freezer and avoid repeated freeze thaw cycles. Store at 2 to 8 centigrade for one week. Store at -20 to -80 centigrade for twelve months from the date of receipt. |
| <b>Storage Buffer</b>   | Supplied as solution form in PBS or lyophilized from PBS.   |
| <b>Reconstitution</b>   | Reconstitute in sterile water for a stock solution.   |

 Tel: 1-631-559-9269 1-516-512-3133

 Email: [info@creative-biomart.com](mailto:info@creative-biomart.com)  Fax: 1-631-938-8127

 45-1 Ramsey Road, Shirley, NY 11967, USA

**Shipping**

They are shipped out with dry ice/blue ice unless customers require otherwise.

**GENE INFORMATION****Gene Name**

TES testis derived transcript (3 LIM domains) [ Homo sapiens (human) ]

**Official Symbol**

TES

**Synonyms**

TES; testis derived transcript (3 LIM domains); testin; DKFZP586B2022; TESS 2; TESTIN; TESS; TESS-2; MGC1146; DKFZp586B2022;

**Gene ID**

26136

**mRNA Refseq**

NM\_015641

**Protein Refseq**

NP\_056456

**MIM**

606085

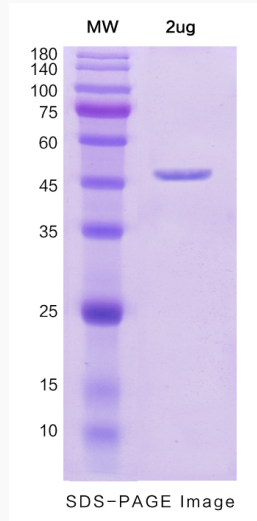
**UniProt ID**

Q9UGI8

 Tel: 1-631-559-9269 1-516-512-3133 Email: [info@creative-biomart.com](mailto:info@creative-biomart.com)  Fax: 1-631-938-8127 45-1 Ramsey Road, Shirley, NY 11967, USA



SDS-PAGE



Tel: 1-631-559-9269 1-516-512-3133

Email: [info@creative-biomart.com](mailto:info@creative-biomart.com) Fax: 1-631-938-8127

45-1 Ramsey Road, Shirley, NY 11967, USA