

Recombinant Human TET3 Protein (824-1795), N-6xHis and Flag-tagged

Cat. No. TET3-13H Lot. No. (See product label)

SPECIFICATION

Product Overview	Recombinant TET3 (824-1795) protein that includes amino acids 824-1795 of human TET3 protein (accession number NP_001274420.1) was expressed in Sf9 cells and contains an N-terminal 6xHis Tag and FLAG-Tag with a molecular weight of 111.3 kDa. The recombinant protein is >30% pure by SDS-PAGE.
Species	Human
Source	Insect Cells
ProteinLength	824-1795
Description	Members of the ten-eleven translocation (TET) gene family, including TET3, play a role in the DNA methylation process.
Molecular Mass	111.3 kDa
Applications	Recombinant TET3 (824-1795) protein is suitable for use in cytosine oxygenase assays, enzyme kinetics, inhibitor screening, and selectivity profiling.
Usage	250 nM of 30bp DNA oligos (sequence: 5'-CAGTAACTGTGGTC(mC)GGTAACTGAC TTGCA-3', contains a 5mCpG site) was incubated with 100 nM recombinant TET3 (824-1795) protein in buffer containing 50 mM HEPES, pH 8.0, 100 μM Fe(NH ₄) ₂ (SO ₄) ₂ , 2 mM ascorbate, 1 mM alpha-ketoglutarate, 1 mM ATP, 1 mM TCEP at 37 centigrade for 1 hr. Activity was detected by Dot-blot.

 Tel: 1-631-559-9269 1-516-512-3133

 Email: info@creative-biomart.com  Fax: 1-631-938-8127

 45-1 Ramsey Road, Shirley, NY 11967, USA

Notes	This product is for research use only and is not for use in diagnostic procedures.
Stability	This product is guaranteed for 6 months from date of arrival.
Storage	Recombinant proteins in solution are temperature sensitive and must be stored at -80 centigrade to prevent degradation. Avoid repeated freeze/thaw cycles and keep on ice when not in storage.
Concentration	0.1 µg/µL

GENE INFORMATION

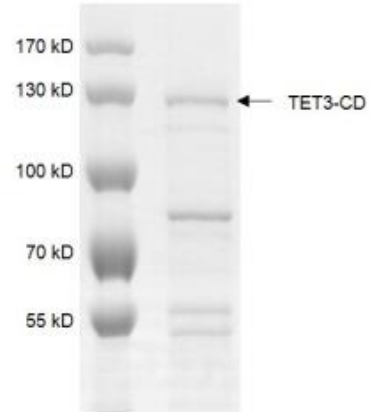
Gene Name	TET3 tet methylcytosine dioxygenase 3 [Homo sapiens (human)]
Official Symbol	TET3
Synonyms	TET3; tet methylcytosine dioxygenase 3; BEFAHRS; hCG_40738; methylcytosine dioxygenase TET3; probable methylcytosine dioxygenase TET3; putative methylcytosine dioxygenase; ten-eleven translocation 3; tet oncogene family member 3; EC 1.14.11.n2
Gene ID	200424
mRNA Refseq	NM_001287491
Protein Refseq	NP_001274420
MIM	613555
UniProt ID	O43151

 Tel: 1-631-559-9269 1-516-512-3133

 Email: info@creative-biomart.com  Fax: 1-631-938-8127

 45-1 Ramsey Road, Shirley, NY 11967, USA

SDS-PAGE



Activity

