

Recombinant Human TET3 Protein (824-1795), N-Flag and C-His tagged

Cat. No. TET3-14H Lot. No. (See product label)

SPECIFICATION

Product Overview	Recombinant Human Ten-eleven translocation 3 protein (TET3), also known as methylcytosine dioxygenase TET3, GenBank Accession # NM_001287491, a.a. 824-1795 (end) with N-terminal FLAG-tag and C-terminal His-tag, expressed in Sf9 cells via a baculovirus expression system.
Species	Human
Source	Sf9 Cells
ProteinLength	824-1795 (end)
Description	Members of the ten-eleven translocation (TET) gene family, including TET3, play a role in the DNA methylation process.
Molecular Mass	108 kDa
Applications	Useful for the study of enzyme kinetics, screening inhibitors, and selectivity profiling.
Usage	Thaw on ice and gently mix prior to use. DO NOT VORTEX. Perform a quick spin before opening. Aliquot into small volumes and flash freeze for long term storage. Avoid multiple freeze/thaw cycles.
Notes	Avoid freeze/thaw cycles!

 Tel: 1-631-559-9269 1-516-512-3133

 Email: info@creative-biomart.com  Fax: 1-631-938-8127

 45-1 Ramsey Road, Shirley, NY 11967, USA

Stability	At least 6 months at –80 centigrade.
Concentration	0.16 mg/mL
Storage Buffer	40 mM Tris-HCl, pH 8.0, 110 mM NaCl, 2.2 mM KCl, 0.04% Tween20, 20% glycerol, 3mM DTT, 100 µg/mL FLAG peptide.
Shipping	At -80 centigrade.

GENE INFORMATION

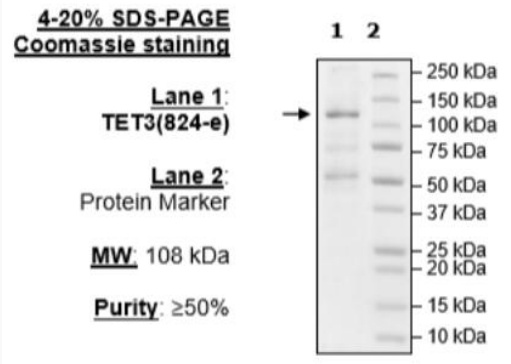
Gene Name	TET3 tet methylcytosine dioxygenase 3 [Homo sapiens (human)]
Official Symbol	TET3
Synonyms	TET3; tet methylcytosine dioxygenase 3; BEFAHRS; hCG_40738; methylcytosine dioxygenase TET3; probable methylcytosine dioxygenase TET3; putative methylcytosine dioxygenase; ten-eleven translocation 3; tet oncogene family member 3; EC 1.14.11.n2
Gene ID	200424
mRNA Refseq	NM_001287491
Protein Refseq	NP_001274420
MIM	613555
UniProt ID	O43151

 Tel: 1-631-559-9269 1-516-512-3133

 Email: info@creative-biomart.com  Fax: 1-631-938-8127

 45-1 Ramsey Road, Shirley, NY 11967, USA

SDS-PAGE



 Tel: 1-631-559-9269 1-516-512-3133

 Email: info@creative-biomart.com  Fax: 1-631-938-8127

 45-1 Ramsey Road, Shirley, NY 11967, USA