

# Recombinant Full Length Human TEX101 Protein, GST tagged

Cat. No. TEX101-20HFL Lot. No. (See product label)

## SPECIFICATION

<b>Product Overview</b>	Human TEX101 full-length ORF ( AAH01861.2, 1-267 aa) recombinant protein with GST-tag at N-terminal was expressed in Wheat germ cell free in vitro.
<b>Species</b>	Human
<b>Source</b>	Wheat germ cell free in vitro
<b>ProteinLength</b>	1-267 aa
<b>Description</b>	Predicted to be involved in binding activity of sperm to zona pellucida; flagellated sperm motility; and regulation of flagellated sperm motility. Predicted to be located in acrosomal vesicle; extracellular region; and plasma membrane. Predicted to be active in plasma membrane raft.
<b>Molecular Mass</b>	54.9 kDa
<b>AASequence</b>	MGAMQIQTSSSQTSPEEAMGTPRIQHLLILLVVGASLLTSGLELYCQKGLSMTVEAD PANMFWNTTEEVETCDKGALCQETILIKAGTETAILATKGCIPGEGEEAITIVQHSSPP GLIVTSYSNYCEDSFCNDKDSLSQFWEFSETTASTVSTTLHCPTCVALGTCFSAPSL PCPNGTTRCYQGKLEITGGGIESSVEVKGCTAMIGCRLMSGILAVGPMFVREACPH QLLTQPRKTENGATCLPIPWWGLQLLLPLLLPSFIHFS
<b>Quality Control</b>	12.5% SDS-PAGE Stained with Coomassie Blue.
<b>Applications</b>	Enzyme-linked Immunoabsorbent Assay Western Blot (Recombinant protein)

 Tel: 1-631-559-9269 1-516-512-3133

 Email: [info@creative-biomart.com](mailto:info@creative-biomart.com)  Fax: 1-631-938-8127

 45-1 Ramsey Road, Shirley, NY 11967, USA

**Antibody Production Protein Array**

<b>Notes</b>	Best use within three months from the date of receipt of this protein.
<b>Storage</b>	Store at -80 centigrade. Aliquot to avoid repeated freezing and thawing.
<b>Storage Buffer</b>	50 mM Tris-HCl, 10 mM reduced Glutathione, pH 8.0 in the elution buffer.

**GENE INFORMATION**

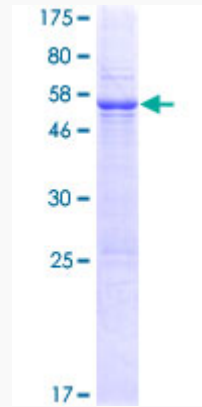
<b>Gene Name</b>	TEX101 testis expressed 101 [ Homo sapiens (human) ]
<b>Official Symbol</b>	TEX101
<b>Synonyms</b>	TEX101; testis expressed 101; testis expressed sequence 101; testis-expressed sequence 101 protein; cancer/testis antigen 131; CT131; MGC4766; SGRG; testis-expressed protein 101; cell surface receptor NYD-SP8; testis-specific protein TES101RP; scleroderma-associated autoantigen; spermatogenesis-related gene protein; GTPR867; NYD-SP8; PRO1884; TES101RP
<b>Gene ID</b>	83639
<b>mRNA Refseq</b>	NM_001130011
<b>Protein Refseq</b>	NP_001123483
<b>MIM</b>	612665
<b>UniProt ID</b>	Q9BY14

 Tel: 1-631-559-9269 1-516-512-3133

 Email: [info@creative-biomart.com](mailto:info@creative-biomart.com)  Fax: 1-631-938-8127

 45-1 Ramsey Road, Shirley, NY 11967, USA

**SDS-PAGE and WB**



 Tel: 1-631-559-9269 1-516-512-3133

 Email: [info@creative-biomart.com](mailto:info@creative-biomart.com)  Fax: 1-631-938-8127

 45-1 Ramsey Road, Shirley, NY 11967, USA