

## Native Human TF Protein, Rhodamine Conjugated

Cat. No. TF-002H Lot. No. (See product label)

### SPECIFICATION

<b>Product Overview</b>	Native human Transferrin, Rhodamine conjugated (2.27 moles Rhodamine (TRITC) per mole of Human Transferrin).
<b>Species</b>	Human
<b>Source</b>	Serum
<b>Description</b>	<p>This gene encodes a glycoprotein with an approximate molecular weight of 76.5 kDa. It is thought to have been created as a result of an ancient gene duplication event that led to generation of homologous C and N-terminal domains each of which binds one ion of ferric iron. The function of this protein is to transport iron from the intestine, reticuloendothelial system, and liver parenchymal cells to all proliferating cells in the body. This protein may also have a physiologic role as granulocyte/pollen-binding protein (GPBP) involved in the removal of certain organic matter and allergens from serum.</p>
<b>Form</b>	Lyophilized
<b>Molecular Mass</b>	80 kDa
<b>Storage</b>	<p>Store vial at 4 centigrade prior to restoration. For extended storage aliquot contents and freeze at -20 centigrade or below. Avoid cycles of freezing and thawing.</p> <p>Centrifuge product if not completely clear after standing at room temperature. This product is stable for several weeks at 4 centigrade as an undiluted liquid. Dilute only prior to immediate use.</p>

 Tel: 1-631-559-9269 1-516-512-3133

 Email: [info@creative-biomart.com](mailto:info@creative-biomart.com)  Fax: 1-631-938-8127

 45-1 Ramsey Road, Shirley, NY 11967, USA

<b>Concentration</b>	1.0 mg/mL by UV absorbance at 280 nm
<b>Storage Buffer</b>	0.02 M Potassium Phosphate, 0.15 M Sodium Chloride, pH 7.2 Stabilizer: 10 mg/ml Polyethylene Glycol (PEG-8000)
<b>Preservative</b>	0.01% (w/v) Sodium Azide
<b>Shipping</b>	Ambient

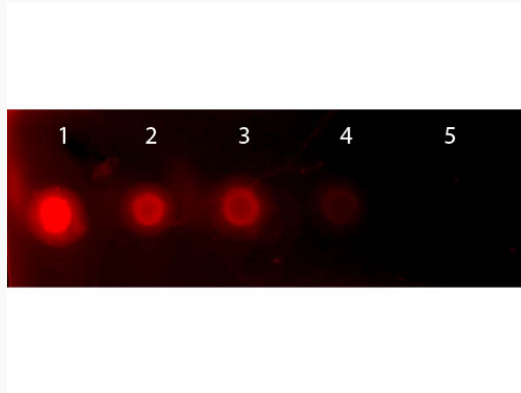
## GENE INFORMATION

<b>Gene Name</b>	TF transferrin [ Homo sapiens (human) ]
<b>Official Symbol</b>	TF
<b>Synonyms</b>	TFQTL1; PRO1557; PRO2086; HEL-S-71p; TF; transferrin
<b>Gene ID</b>	7018
<b>mRNA Refseq</b>	NM_001063
<b>Protein Refseq</b>	NP_001054
<b>MIM</b>	190000
<b>UniProt ID</b>	P02787

 Tel: 1-631-559-9269 1-516-512-3133

 Email: [info@creative-biomart.com](mailto:info@creative-biomart.com)  Fax: 1-631-938-8127

 45-1 Ramsey Road, Shirley, NY 11967, USA



Tel: 1-631-559-9269 1-516-512-3133

Email: [info@creative-biomart.com](mailto:info@creative-biomart.com) Fax: 1-631-938-8127

45-1 Ramsey Road, Shirley, NY 11967, USA