

Recombinant Bovine TF Protein, His-tagged

Cat. No. TF-146B Lot. No. (See product label)

SPECIFICATION

Product Overview	Recombinant Bovine TF(Asp284~Ala575) fused with His tag at N-terminal was expressed in E. coli.
Species	Bovine
Source	E.coli
ProteinLength	Asp284~Ala575
Form	PBS, pH7.4, containing 0.01% SKL, 1mM DTT, 5% Trehalose and Proclin300.
Molecular Mass	36.1kDa
Endotoxin	<1.0EU per 1ug (determined by the LAL method)
Purity	> 92%
Applications	Positive Control; Immunogen; SDS-PAGE; WB. If bio-activity of the protein is needed, please check active protein
Stability	The thermal stability is described by the loss rate. The loss rate was determined by accelerated thermal degradation test, that is, incubate the protein at 37 centigrade for 48h, and no obvious degradation and precipitation were observed. The loss rate is less than 5% within the expiration date under appropriate storage condition.

 Tel: 1-631-559-9269 1-516-512-3133

 Email: info@creative-biomart.com  Fax: 1-631-938-8127

 45-1 Ramsey Road, Shirley, NY 11967, USA

Storage	Avoid repeated freeze/thaw cycles. Store at 2-8 centigrade for one month. Aliquot and store at -80 centigrade for 12 months.
----------------	--

Reconstitution	Reconstitute in PBS or others
-----------------------	-------------------------------

GENE INFORMATION

Gene Name	TF transferrin [Bos taurus]
------------------	-------------------------------

Official Symbol	TF
------------------------	----

Synonyms	beta-1 metal-binding globulin; siderophilin
-----------------	---

Gene ID	280705
----------------	--------

mRNA Refseq	NM_177484
--------------------	-----------

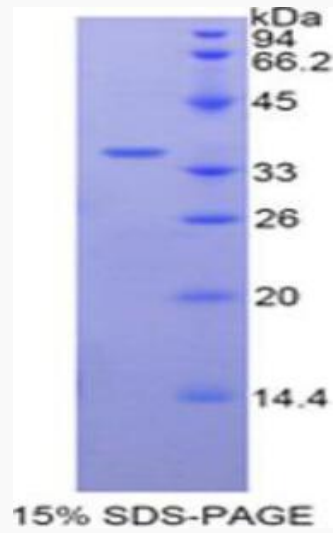
Protein Refseq	NP_803450
-----------------------	-----------

UniProt ID	Q29443
-------------------	--------

 Tel: 1-631-559-9269 1-516-512-3133

 Email: info@creative-biomart.com  Fax: 1-631-938-8127

 45-1 Ramsey Road, Shirley, NY 11967, USA



 Tel: 1-631-559-9269 1-516-512-3133

 Email: info@creative-biomart.com  Fax: 1-631-938-8127

 45-1 Ramsey Road, Shirley, NY 11967, USA