

## Native Sheep transferrin

Cat. No. TF-172S Lot. No. (See product label)

### SPECIFICATION

<b>Species</b>	Sheep
<b>Source</b>	Sheep Serum
<b>ProteinLength</b>	Full length native Sheep transferrin
<b>Description</b>	Transferrin concentration and total iron binding capacity (TIBC) are currently used to assess iron status. Although correlation between TIBC and transferrin is generally considered as good, conversion factors between the two analytes found in literature show large differences. Although the price per test is lower for TIBC, there are a number of analytical advantages of serum transferrin.
<b>Form</b>	Liquid
<b>Purity</b>	>95% (SDS-PAGE)
<b>Applications</b>	Western blotting,ELISA,etc.
<b>Storage</b>	Aliquot and store at -20°C or -80°C. Avoid repeated freeze / thaw cycles.
<b>Storage Buffer</b>	Tris pH8.0

### GENE INFORMATION

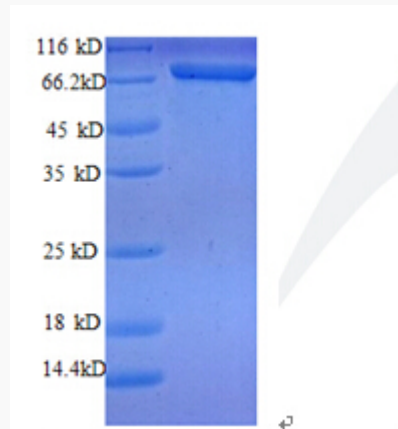
**Gene Name** TF transferrin [ *Ovis aries* ]

 Tel: 1-631-559-9269 1-516-512-3133

 Email: [info@creative-biomart.com](mailto:info@creative-biomart.com)  Fax: 1-631-938-8127

 45-1 Ramsey Road, Shirley, NY 11967, USA

<b>Official Symbol</b>	TF
<b>Synonyms</b>	TF; transferrin;
<b>Gene ID</b>	443000



Tel: 1-631-559-9269 1-516-512-3133

Email: [info@creative-biomart.com](mailto:info@creative-biomart.com) Fax: 1-631-938-8127

45-1 Ramsey Road, Shirley, NY 11967, USA