

Recombinant Full Length Human TF Protein, C-Flag-tagged

Cat. No. TF-393HFL **Lot. No.** (See product label)

SPECIFICATION

Product Overview	Recombinant Full Length Human TF Protein, fused to Flag-tag at C-terminus, was expressed in Mammalian cells.
Species	Human
Source	Mammalian Cells
Description	This gene encodes a glycoprotein with an approximate molecular weight of 76.5 kDa. It is thought to have been created as a result of an ancient gene duplication event that led to generation of homologous C and N-terminal domains each of which binds one ion of ferric iron. The function of this protein is to transport iron from the intestine, reticuloendothelial system, and liver parenchymal cells to all proliferating cells in the body. This protein may also have a physiologic role as granulocyte/pollen-binding protein (GPBP) involved in the removal of certain organic matter and allergens from serum.
Form	25 mM Tris HCl, pH 7.3, 100 mM glycine, 10% glycerol.
Molecular Mass	75.1 kDa
AA Sequence	MRLAVGALLVCAVLGLCLAVPDKTVRWCAVSEHEATKCQSFRDHMKSVIPSDGPSV ACVKKASYLDCIRA IAANEADAVTLDAGLVYDAYLAPNNLKPVVAEFYGSKEDPQTF YYAVAVVKKKDSGFQMNQLRGKKSCHTG LGRSAGWNIPIGLLYCDLPEPRKPLEKAV ANFFSGSCAPCADGTDFFPQLCQLCPGCGCSTLNQYFGYSGA FKCLKNGAGDVAFV KHSTIFENLANKADRDQYELLCLDNTRKPVDEYKDCHLAQVPSHTVVARSMGGKED

 Tel: 1-631-559-9269 1-516-512-3133

 Email: info@creative-biomart.com  Fax: 1-631-938-8127

 45-1 Ramsey Road, Shirley, NY 11967, USA

LIWELLNQAQEHFGKDKSKEFQLFSSPHGKDLLFKDSAHGFLKVPPRMDAKMYLGY
 EYVTAIRNLREGTC QEAPTDECKPVKWCALSHHERLKCDEWSVNSVGKIECVSAET
 TEDCIAKIMNGEADAMSLDGGFVYIAGK CGLVPVLAENYNKSDNCEDTPEAGYFAV
 AVVKKSASDLTWDNLKGKKSCHTAVGRTAGWNIPMGLLYNKI NHCRFDEFFSEGC
 APGSKKDSSLCKLCMGSGNLNCEPNNKEGYGYTGAFRCLVEKGDVAFVKHQVTP
 QN TGGKNPDPWAKNLNEKDYELLCLDGTRKPVVEYANCHLARAPNHAVVTRKDKE
 ACVHKILRQQQHLFGSN VTDCSGNFCLFRSETKDLLFRDDTVCLAKLHDRNTYEKY
 LGEEYKAVGNLRKCSTSSLLEACTFRRPTRTRPLEQKLISEEDLAANDILDYKDDDD
 KV

Purity > 80% as determined by SDS-PAGE and Coomassie blue staining.

Stability Stable for 12 months from the date of receipt of the product under proper storage and handling conditions. Avoid repeated freeze-thaw cycles.

Storage Store at -80 centigrade.

Concentration >50 ug/mL as determined by microplate BCA method.

Preparation Recombinant protein was captured through anti-DDK affinity column followed by conventional chromatography steps.

Protein Families Druggable Genome, Secreted Protein

Full Length Full L.

GENE INFORMATION

Gene Name TF transferrin [[Homo sapiens \(human\)](#)]

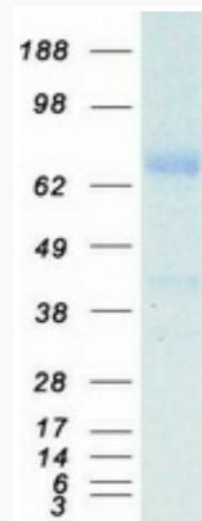
Official Symbol TF

 Tel: 1-631-559-9269 1-516-512-3133

 Email: info@creative-biomart.com  Fax: 1-631-938-8127

 45-1 Ramsey Road, Shirley, NY 11967, USA

Synonyms	TFQTL1; PRO1557; PRO2086; HEL-S-71p
Gene ID	7018
mRNA Refseq	NM_001063.4
Protein Refseq	NP_001054.2
MIM	190000
UniProt ID	P02787



Coomassie blue staining of purified TF protein.

 Tel: 1-631-559-9269 1-516-512-3133

 Email: info@creative-biomart.com  Fax: 1-631-938-8127

 45-1 Ramsey Road, Shirley, NY 11967, USA