

Recombinant Human TFAM Protein, His/GST-tagged

Cat. No. TFAM-654H Lot. No. (See product label)

SPECIFICATION

Product Overview	Recombinant Human TFAM(Ser43~Cys246) fused with His/GST tag at N-terminal was expressed in E. coli.
Species	Human
Source	E.coli
ProteinLength	Ser43~Cys246
Description	This gene encodes a key mitochondrial transcription factor containing two high mobility group motifs. The encoded protein also functions in mitochondrial DNA replication and repair. Sequence polymorphisms in this gene are associated with Alzheimer's and Parkinson's diseases. There are pseudogenes for this gene on chromosomes 6, 7, and 11. Alternative splicing results in multiple transcript variants.
Form	PBS, pH7.4, containing 0.01% SKL, 1mM DTT, 5% Trehalose and Proclin300.
Molecular Mass	51.4kDa
Endotoxin	<1.0EU per 1g (determined by the LAL method)
Purity	> 98%
Applications	Positive Control; Immunogen; SDS-PAGE; WB. If bio-activity of the protein is needed, please check active protein.

 Tel: 1-631-559-9269 1-516-512-3133

 Email: info@creative-biomart.com  Fax: 1-631-938-8127

 45-1 Ramsey Road, Shirley, NY 11967, USA

Stability The thermal stability is described by the loss rate. The loss rate was determined by accelerated thermal degradation test, that is, incubate the protein at 37 centigrade for 48h, and no obvious degradation and precipitation were observed. The loss rate is less than 5% within the expiration date under appropriate storage condition.

Storage Avoid repeated freeze/thaw cycles. Store at 2-8 centigrade for one month. Aliquot and store at -80 centigrade for 12 months.

Reconstitution Reconstitute in PBS or others.

GENE INFORMATION

Gene Name TFAM transcription factor A, mitochondrial [Homo sapiens]

Official Symbol TFAM

Synonyms TFAM; transcription factor A, mitochondrial; TCF6, TCF6L2; TCF-6; transcription factor 6; mitochondrial transcription factor 1; mitochondrial transcription factor A; Transcription factor 6-like 2 (mitochondrial transcription factor); TCF6; MtTF1; mtTFA; TCF6L1; TCF6L2; TCF6L3;

Gene ID 7019

mRNA Refseq NM_003201

Protein Refseq NP_003192

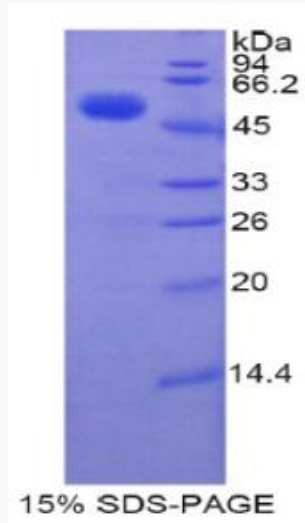
MIM 600438


UniProt ID Q00059

 Tel: 1-631-559-9269 1-516-512-3133


 Email: info@creative-biomart.com  Fax: 1-631-938-8127

 45-1 Ramsey Road, Shirley, NY 11967, USA



 Tel: 1-631-559-9269 1-516-512-3133

 Email: info@creative-biomart.com  Fax: 1-631-938-8127

 45-1 Ramsey Road, Shirley, NY 11967, USA