

Recombinant Human TFAM protein, His-tagged

Cat. No. TFAM-7866H Lot. No. (See product label)

SPECIFICATION

Product Overview	Recombinant Human TFAM protein(Q00059)(43-246aa), fused with N-terminal His tag, was expressed in E.coli.
Species	Human
Source	E.coli
ProteinLength	43-246aa
Form	If the delivery form is liquid, the default storage buffer is Tris/PBS-based buffer, 5%-50% glycerol. If the delivery form is lyophilized powder, the buffer before lyophilization is Tris/PBS-based buffer, 6% Trehalose, pH 8.0.
Molecular Mass	28.5 kDa
Purity	Greater than 90% as determined by SDS-PAGE.
Storage	Store at -20°C/-80°C upon receipt, aliquoting is necessary for mutiple use. Avoid repeated freeze-thaw cycles.
Reconstitution	We recommend that this vial be briefly centrifuged prior to opening to bring the contents to the bottom. Please reconstitute protein in deionized sterile water to a concentration of 0.1-1.0 mg/mL. We recommend to add 5-50% of glycerol (final concentration) and aliquot for long-term storage at -20°C/-80°C.

 Tel: 1-631-559-9269 1-516-512-3133

 Email: info@creative-biomart.com  Fax: 1-631-938-8127

 45-1 Ramsey Road, Shirley, NY 11967, USA

AA Sequence

SSVLASCPKKPVSSYLRFKSKEQLPIFKAQNPDAKTTELIRRIAQRWRELPDSKKKIYQ
 DAYRAEWQVYKEEISRFKEQLTPSQIMSLEKEIMDKHLKRKAMTKKKELTLLGKPKR
 PRSAYNVVVAERFQEAKGDSPQEKLKTVKENWKNLSDSEKELYIQHAKEDETRYHN
 EMKSWEEQMIEVGRKDLLRRTIKKQRKYGAEEC

GENE INFORMATION

Gene Name TFAM transcription factor A, mitochondrial [Homo sapiens]

Official Symbol TFAM

Synonyms

TFAM; transcription factor A, mitochondrial; TCF6, TCF6L2; TCF-6; transcription factor 6; mitochondrial transcription factor 1; mitochondrial transcription factor A; Transcription factor 6-like 2 (mitochondrial transcription factor); TCF6; MtTF1; mtTFA; TCF6L1; TCF6L2; TCF6L3;

Gene ID 7019

mRNA Refseq NM_003201

Protein Refseq NP_003192

MIM 600438

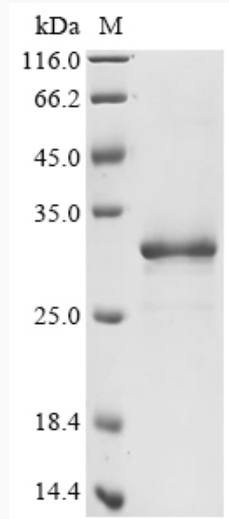
UniProt ID Q00059

 Tel: 1-631-559-9269 1-516-512-3133

 Email: info@creative-biomart.com  Fax: 1-631-938-8127

 45-1 Ramsey Road, Shirley, NY 11967, USA

SDS-PAGE



 Tel: 1-631-559-9269 1-516-512-3133

 Email: info@creative-biomart.com  Fax: 1-631-938-8127

 45-1 Ramsey Road, Shirley, NY 11967, USA