

Recombinant Human TFE3 Protein, MYC/DDK-tagged, C13 and N15-labeled

Cat. No. TFE3-399H **Lot. No.** (See product label)

SPECIFICATION

Product Overview	TFE3 MS Standard C13 and N15-labeled recombinant protein (NP_006512) with a C-terminal MYC/DDK tag, was expressed in HEK293 cells.
Species	Human
Source	HEK293
Description	This gene encodes a basic helix-loop-helix domain-containing transcription factor that binds MUE3-type E-box sequences in the promoter of genes. The encoded protein promotes the expression of genes downstream of transforming growth factor beta (TGF-beta) signaling. This gene may be involved in chromosomal translocations in renal cell carcinomas and other cancers, resulting in the production of fusion proteins. Translocation partners include PRCC (papillary renal cell carcinoma), NONO (non-POU domain containing, octamer-binding), and ASPSCR1 (alveolar soft part sarcoma chromosome region, candidate 1), among other genes. Alternative splicing results in multiple transcript variants. [provided by RefSeq, Aug 2013]
Molecular Mass	61.5 kDa
AA Sequence	MSHAAEPARDGVEASAEGPRAVFLLEERRPADSAQLLSLNSLLPESGIVADIELEN VLDPDSFYELKSQPLPLRSSLPIQLQATPATPATLSASSSAGGSRTAMPSSSSSRVL LRQQLMRAQAQEQERRERREQAAAAPFPSPAPASPAISVVGVSAGGHTLSRPPPA QVPREVLKVQTHLENPTRYHLQQARRQVKQYLSTTLGPKLASQALTPPPGPASAQ

 Tel: 1-631-559-9269 1-516-512-3133

 Email: info@creative-biomart.com  Fax: 1-631-938-8127

 45-1 Ramsey Road, Shirley, NY 11967, USA

PLPAPEAAHTTGPTGSAPNSPMALLTIGSSSEKEIDDVIDEIIISLESSYNDEMLSYLPG
 GTTGLQLPSTLPVSGNLLDVYSSQGVATPAITVSNSCPAELPNIKREISETTEAKALLKE
 RQKKNHNLIERRRRFNINDRIKELGTLIPKSSDPEMRWNKGTLKASVDYIRKLQKE
 QQRSKDLESRQRSLEQANRSLQLRIQELELQAQIHGLPVPPTPGLLSLATTASDSDL
 KPEQLDIEEEGRPGAATFHVGGGPAQNAPHQQPPAPPSDALLDLHFPSDHLGDLGD
 PFHLGLEDILMEEEEGVVGGLSGGALSPLRAASDPLLSSVSPAVSKASSRRSSFSME
 EESTRTRPLEQKLISEEDLAANDILDYKDDDDKV

Purity > 80% as determined by SDS-PAGE and Coomassie blue staining

Stability Stable for 3 months from receipt of products under proper storage and handling conditions.

Storage Store at -80 centigrade. Avoid repeated freeze-thaw cycles.

Concentration 50 µg/mL as determined by BCA

Storage Buffer 100 mM glycine, 25 mM Tris-HCl, pH 7.3.

GENE INFORMATION

Gene Name TFE3 transcription factor binding to IGHM enhancer 3 [Homo sapiens (human)]

Official Symbol TFE3

Synonyms TFE3; transcription factor binding to IGHM enhancer 3; transcription factor E3; bHLHe33; member A; TFEA; transcription factor E family; Transcription factor for IgH enhancer; transcription factor E family, member A; class E basic helix-loop-helix protein 33; RCCP2; RCCX1;

Gene ID 7030

 Tel: 1-631-559-9269 1-516-512-3133

 Email: info@creative-biomart.com  Fax: 1-631-938-8127

 45-1 Ramsey Road, Shirley, NY 11967, USA

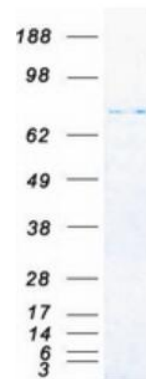
mRNA Refseq [NM_006521](#)

Protein Refseq [NP_006512](#)

MIM [314310](#)


UniProt ID [P19532](#)

SDS-PAGE



 Tel: 1-631-559-9269 1-516-512-3133

 Email: info@creative-biomart.com  Fax: 1-631-938-8127

 45-1 Ramsey Road, Shirley, NY 11967, USA