

Recombinant Human TFEB protein, His-sumostar-tagged

Cat. No. TFEB-4694H Lot. No. (See product label)

SPECIFICATION

Product Overview	Recombinant Human TFEB protein(P19484)(1-476 aa), fused with N-terminal His and sumostar tag, was expressed in Yeast.
Species	Human
Source	Yeast
ProteinLength	1-476 aa
Form	For liquid formulations, the standard storage buffer consists of a Tris or PBS based solution supplemented with 5-50% glycerol. When provided as lyophilized powder, the product undergoes freeze-drying from a Tris- or PBS-based formulation containing 6% trehalose, adjusted to pH 8.0 prior to the lyophilization process.
Molecular Mass	66.0 kDa
AASequence	MASRIGLRMQLMREQAQQEEQRERMQQQAVMHYMQQQQQQQQQQLGGPPTPAI NTPVHFQSPPPVPGEV LKVQSYLENPTS YHLQQSQHQKVREYLSETYGNKFAAHIS PAQGSPKPPPAASPGVRAGHVLSSSAGNSAPNSPMAMLHIGSNPERELDDVIDNIM RLDDVLGYINPEMQMPNTLPLSSSHLNVYSSDPQVTASLVGVTSSSCPADLTQKREL TDAESRALAKERQKKDNHNLIERRRRFNINDRIKELGMLIPKANDLDVRWNKG TILKA SVDYIRRMQKDLQKSRELENHSRRLEMTNKQLWLRIQELEMQARVHGLPTTSPSG MNMAELAQQVVKQELPSEEGPGEALMLGAEVPDPEPLPALPPQAPLPLPTQPPSPF HHLDFSHSLSFGGREDEGPPGYPEPLAPGHGSPFPSPSKKDLMLLDDSLPLAS DPLLSTMSPEASKASSRRSSFSMEEGDVL

 Tel: 1-631-559-9269 1-516-512-3133

 Email: info@creative-biomart.com  Fax: 1-631-938-8127

 45-1 Ramsey Road, Shirley, NY 11967, USA

Purity	Greater than 95% as determined by SDS-PAGE.
Storage	Store at -20°C/-80°C upon receipt, aliquoting is necessary for mutiple use. Avoid repeated freeze-thaw cycles.
Reconstitution	Please reconstitute protein indeionized sterile water to a concentration of 0.1-1.0 mg/mL. Aliquot for long-term storage at -80°C.

GENE INFORMATION

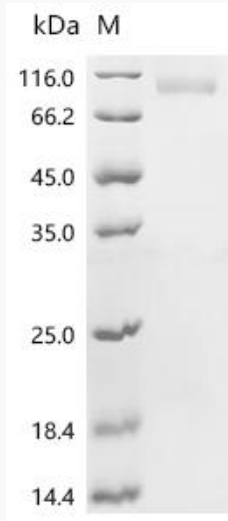
Gene Name	TFEB transcription factor EB [Homo sapiens]
Official Symbol	TFEB
Synonyms	TFEB; transcription factor EB; bHLHe35; TCFEB; T-cell transcription factor EB; class E basic helix-loop-helix protein 35; BHLHE35; ALPHATFEB;
Gene ID	7942
mRNA Refseq	NM_001167827
Protein Refseq	NP_001161299
MIM	600744
UniProt ID	P19484

 Tel: 1-631-559-9269 1-516-512-3133

 Email: info@creative-biomart.com  Fax: 1-631-938-8127

 45-1 Ramsey Road, Shirley, NY 11967, USA

SDS-PAGE



 Tel: 1-631-559-9269 1-516-512-3133

 Email: info@creative-biomart.com  Fax: 1-631-938-8127

 45-1 Ramsey Road, Shirley, NY 11967, USA