

Recombinant Human TFF1 Protein, Myc/DDK-tagged, C13 and N15-labeled

Cat. No. TFF1-5443H **Lot. No.** (See product label)

SPECIFICATION

Product Overview

TFF1 MS Standard C13 and N15-labeled recombinant protein (NP_003216) with a C-terminal MYC/DDK tag, was expressed in HEK293 cells.

Species

Human

Source

HEK293

Description

Members of the trefoil family are characterized by having at least one copy of the trefoil motif, a 40-amino acid domain that contains three conserved disulfides. They are stable secretory proteins expressed in gastrointestinal mucosa. Their functions are not defined, but they may protect the mucosa from insults, stabilize the mucus layer, and affect healing of the epithelium. This gene, which is expressed in the gastric mucosa, has also been studied because of its expression in human tumors. This gene and two other related trefoil family member genes are found in a cluster on chromosome 21.

Molecular Mass

9.15 kDa

AA Sequence

MATMENKVICALVLVSMLALGTLAEAQTTCTVAPRERQNCGFPGVTPSQCANKGC
CFDDTVRGVPWCFYPNTIDVPPEEECEFTRTRPLEQKLISEEDLAANDILDYKDDDD
KV

Purity

> 80% as determined by SDS-PAGE and Coomassie blue staining

 Tel: 1-631-559-9269 1-516-512-3133

 Email: info@creative-biomart.com  Fax: 1-631-938-8127

 45-1 Ramsey Road, Shirley, NY 11967, USA

Stability	Stable for 3 months from receipt of products under proper storage and handling conditions.
Storage	Store at -80 centigrade. Avoid repeated freeze-thaw cycles.
Concentration	50 µg/mL as determined by BCA
Storage Buffer	100 mM glycine, 25 mM Tris-HCl, pH 7.3.

GENE INFORMATION

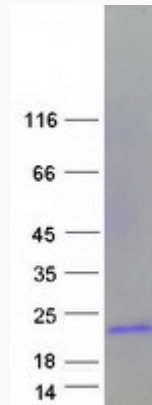
Gene Name	TFF1 trefoil factor 1 [Homo sapiens (human)]
Official Symbol	TFF1
Synonyms	TFF1; trefoil factor 1; BCEI, breast cancer, estrogen inducible sequence expressed in; D21S21; HP1.A; HPS2; pNR 2; pS2; protein pS2; polypeptide P1.A; gastrointestinal trefoil protein pS2; breast cancer estrogen-inducible protein; breast cancer estrogen-inducible sequence; BCEI; pNR-2;
Gene ID	7031
mRNA Refseq	NM_003225
Protein Refseq	NP_003216
MIM	113710
UniProt ID	P04155

 Tel: 1-631-559-9269 1-516-512-3133

 Email: info@creative-biomart.com  Fax: 1-631-938-8127

 45-1 Ramsey Road, Shirley, NY 11967, USA

SDS-PAGE



 Tel: 1-631-559-9269 1-516-512-3133

 Email: info@creative-biomart.com  Fax: 1-631-938-8127

 45-1 Ramsey Road, Shirley, NY 11967, USA