

Recombinant Rhesus macaque TFPI protein, His-tagged

Cat. No. TFPI-4683R Lot. No. (See product label)

SPECIFICATION

Product Overview	Recombinant Rhesus macaque TFPI protein (Asp29-Lys282), fused to His tag at C-terminus, was expressed in human 293 cells (HEK293).
Species	Rhesus macaque
Source	HEK293
ProteinLength	254
Description	Tissue factor pathway inhibitor (TFPI) is also known as Extrinsic pathway inhibitor (EPI), Lipoprotein - associated coagulation inhibitor (LACI), is a plasma proteinase inhibitor synthesized by vascular endothelial cells and part of it is associated with glycosaminoglycans of these cells. TFPI is a single-chain polypeptide which can reversibly inhibit Factor Xa (Xa) and Thrombin (Factor IIa). TFPI is a secreted protein with a Nterminal acidic region, three Kunitz (K) domains separated with by two linker regions, and a Cterminal basic region. The first K domain inhibits coagulation factor VIIa complexed to tissue factor (TF); The second K domain inhibits factor Xa; The third K domain binds to heparin; The Cterminal basic region may have several functions. For example, it plays an important role in binding of TFPI to cell surfaces.
Form	Lyophilized from 0.22 um filtered solution in PBS, pH7.4, 10% trehalose.
Molecular Mass	The protein has a calculated MW of 31.1 kDa. The protein migrates as 41-45 kDa under reducing (R) condition (SDS-PAGE) due to glycosylation.

 Tel: 1-631-559-9269 1-516-512-3133

 Email: info@creative-biomart.com  Fax: 1-631-938-8127

 45-1 Ramsey Road, Shirley, NY 11967, USA

Endotoxin	Less than 1.0 EU per ug by the LAL method.
Purity	>95% as determined by SDS-PAGE.
Storage	<p>For long term storage, the product should be stored at lyophilized state at -20 centigrade or lower.</p> <p>Please avoid repeated freeze-thaw cycles.</p> <p>This product is stable after storage at:</p> <p>-20 centigrade to -70 centigrade for 12 months in lyophilized state; -70 centigrade for 3 months under sterile conditions after reconstitution.</p>
Reconstitution	It is recommended that sterile water be added to the vial to prepare a stock solution of 0.2 ug/ul. Centrifuge the vial at 4°C before opening to recover the entire contents.

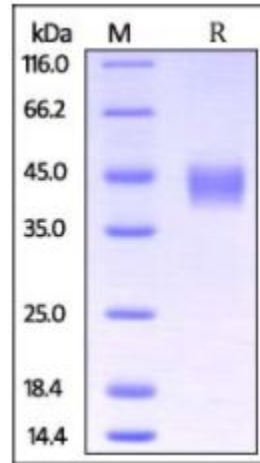
GENE INFORMATION

Gene Name	TFPI
Official Symbol	TFPI
Synonyms	EPI; LACI
Gene ID	613026
mRNA Refseq	NM_001195022.1
Protein Refseq	NP_001181951.1
UniProt ID	I0FUM5

 Tel: 1-631-559-9269 1-516-512-3133

 Email: info@creative-biomart.com  Fax: 1-631-938-8127

 45-1 Ramsey Road, Shirley, NY 11967, USA

SDS-PAGE of TFPI-4683R

Rhesus macaque TFPI, His Tag on SDS-PAGE under reducing (R) condition. The gel was stained overnight with Coomassie Blue. The purity of the protein is greater than 95%.

 Tel: 1-631-559-9269 1-516-512-3133

 Email: info@creative-biomart.com  Fax: 1-631-938-8127

 45-1 Ramsey Road, Shirley, NY 11967, USA