

## Recombinant Human TFPI protein, His-Avi-tagged

**Cat. No.** TFPI-646H    **Lot. No.** (See product label)

### SPECIFICATION

<b>Product Overview</b>	Recombinant Human TFPI protein(P10646-1)(Asp29-Lys282), fused with C-terminal His and Avi tag, was expressed in HEK293.
<b>Species</b>	Human
<b>Source</b>	HEK293
<b>ProteinLength</b>	Asp29-Lys282
<b>Tag</b>	C-His-Avi
<b>Form</b>	Lyophilized from 0.22µm filtered solution in PBS (pH 7.4). Normally 5% trehalose is added as protectant before lyophilization.
<b>Bio-activity</b>	Measured by its ability to inhibit trypsin cleavage of a fluorogenic peptide substrate, the IC50 value is < 0.75 nM.
<b>Molecular Mass</b>	The protein has a predicted MW of 32.1 kDa. Due to glycosylation, the protein migrates to 40-50 kDa based on Tris-Bis PAGE result.
<b>Endotoxin</b>	Less than 1EU per µg by the LAL method.
<b>Purity</b>	> 95% as determined by Tris-Bis PAGE;> 95% as determined by HPLC
<b>Storage</b>	Reconstituted protein stable at -80°C for 12 months, 4°C for 1 week. Use a manual

 Tel: 1-631-559-9269    1-516-512-3133

 Email: [info@creative-biomart.com](mailto:info@creative-biomart.com)     Fax: 1-631-938-8127

 45-1 Ramsey Road, Shirley, NY 11967, USA

defrost freezer and avoid repeated freeze-thaw cycles.

**Reconstitution**

Centrifuge tubes before opening. Reconstituting to a concentration more than 100 µg/ml is recommended. Dissolve the lyophilized protein in distilled water.

## GENE INFORMATION

**Gene Name**

TFPI tissue factor pathway inhibitor (lipoprotein-associated coagulation inhibitor) [ Homo sapiens ]

**Official Symbol**

TFPI

**Synonyms**

TFPI; tissue factor pathway inhibitor (lipoprotein-associated coagulation inhibitor); LACI; tissue factor pathway inhibitor; EPI; extrinsic pathway inhibitor; TFI; TFPI1; anti-convertin;

**Gene ID**

7035

**mRNA Refseq**

NM\_001032281

**Protein Refseq**

NP\_001027452

**MIM**

152310

**UniProt ID**

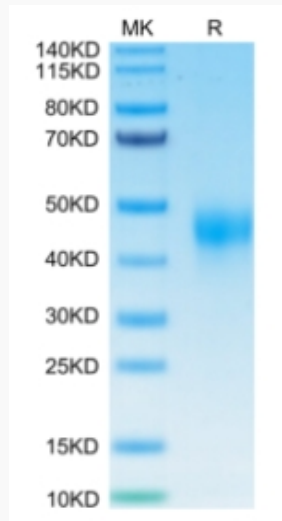
P10646

 Tel: 1-631-559-9269 1-516-512-3133

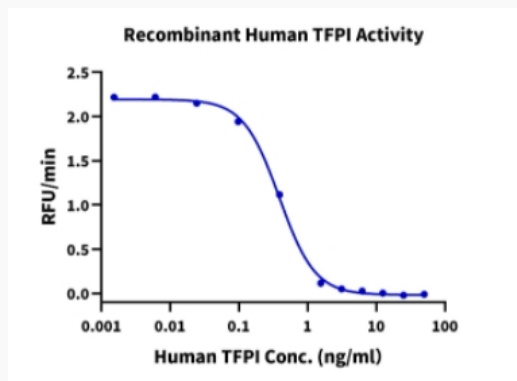
 Email: [info@creative-biomart.com](mailto:info@creative-biomart.com)  Fax: 1-631-938-8127

 45-1 Ramsey Road, Shirley, NY 11967, USA

**Tris-Bis PAGE**



**Bioactivity Data**



 Tel: 1-631-559-9269 1-516-512-3133

 Email: [info@creative-biomart.com](mailto:info@creative-biomart.com)  Fax: 1-631-938-8127

 45-1 Ramsey Road, Shirley, NY 11967, USA