

Recombinant Human TFPI protein, His-Avi-tagged, Biotinylated

Cat. No. TFPI-646HB **Lot. No.** (See product label)

SPECIFICATION

Product Overview	Biotinylated Recombinant Human TFPI protein(P10646-1)(Asp29-Lys282), fused with C-terminal His and Avi tag, was expressed in HEK293.
Species	Human
Source	HEK293
ProteinLength	Asp29-Lys282
Tag	C-His-Avi
Conjugation/Label	Biotin
Form	Lyophilized from 0.22µm filtered solution in PBS (pH 7.4). Normally 5% trehalose is added as protectant before lyophilization.
Bio-activity	Measured by its ability to inhibit trypsin cleavage of a fluorogenic peptide substrate, the IC50 value is < 0.75 nM.
Molecular Mass	The protein has a predicted MW of 32.1 kDa. Due to glycosylation, the protein migrates to 40-50 kDa based on Tris-Bis PAGE result.
Endotoxin	Less than 1EU per µg by the LAL method.

 Tel: 1-631-559-9269 1-516-512-3133

 Email: info@creative-biomart.com  Fax: 1-631-938-8127

 45-1 Ramsey Road, Shirley, NY 11967, USA

Purity	> 95% as determined by Tris-Bis PAGE
Storage	Reconstituted protein stable at -80°C for 12 months, 4°C for 1 week. Use a manual defrost freezer and avoid repeated freeze-thaw cycles.
Reconstitution	Centrifuge tubes before opening. Reconstituting to a concentration more than 100 µg/ml is recommended. Dissolve the lyophilized protein in distilled water.
Conjugation	Biotin

GENE INFORMATION

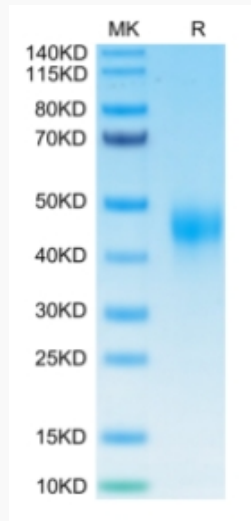
Gene Name	TFPI tissue factor pathway inhibitor (lipoprotein-associated coagulation inhibitor) [Homo sapiens]
Official Symbol	TFPI
Synonyms	TFPI; tissue factor pathway inhibitor (lipoprotein-associated coagulation inhibitor); LACI; tissue factor pathway inhibitor; EPI; extrinsic pathway inhibitor; TFI; TFPI1; anti-convertin;
Gene ID	7035
mRNA Refseq	NM_001032281
Protein Refseq	NP_001027452
MIM	152310
UniProt ID	P10646

 Tel: 1-631-559-9269 1-516-512-3133

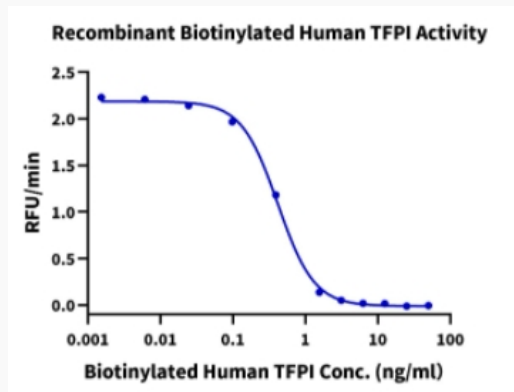
 Email: info@creative-biomart.com  Fax: 1-631-938-8127

 45-1 Ramsey Road, Shirley, NY 11967, USA

Tris-Bis PAGE



Bioactivity Data



 Tel: 1-631-559-9269 1-516-512-3133

 Email: info@creative-biomart.com  Fax: 1-631-938-8127

 45-1 Ramsey Road, Shirley, NY 11967, USA