

## Active Recombinant Human TFPI protein, His-tagged

Cat. No. TFPI-875H Lot. No. (See product label)

### SPECIFICATION

<b>Product Overview</b>	Active Recombinant Human TFPI protein(NP_006278.1) (Met 1-Lys 282) was expressed in HEK293 with a C-terminal polyhistidine tag.
<b>Species</b>	Human
<b>Source</b>	HEK293
<b>ProteinLength</b>	1-282 aa
<b>Form</b>	Lyophilized from sterile PBS, pH 7.4.
<b>Bio-activity</b>	Measured by its ability to inhibit trypsin cleavage of a fluorogenic peptide substrate, Mca-RPKPVE-Nval-WRK(Dnp)-NH <sub>2</sub> . The IC <sub>50</sub> value is < 0.4 nM, as measured in 100µL reaction mixture containing 1.25 ng trypsin, 10 µM substrate, 50 mM Tris, 10 mM CaCl <sub>2</sub> , 0.15 M NaCl, 0.05% Brij-35, pH 7.5.
<b>Molecular Mass</b>	The secreted recombinant human TFPI comprises 265 amino acids with a predicted molecular mass of 30.6 kDa. As a result of glycosylation, the apparent molecular mass of rhTFPI is approximately 42-45 kDa in SDS-PAGE under reducing conditions.
<b>Endotoxin</b>	< 1.0 EU per µg protein as determined by the LAL method.
<b>Purity</b>	> 85 % as determined by SDS-PAGE
<b>Storage</b>	Store it under sterile conditions at -20°C to -80°C upon receiving. Recommend to

 Tel: 1-631-559-9269 1-516-512-3133

 Email: [info@creative-biomart.com](mailto:info@creative-biomart.com)  Fax: 1-631-938-8127

 45-1 Ramsey Road, Shirley, NY 11967, USA

aliquot the protein into smaller quantities for optimal storage. Avoid repeated freeze-thaw cycles.

**Reconstitution**

It is recommended that sterile water be added to the vial to prepare a stock solution of 0.2 ug/ul. Centrifuge the vial at 4°C before opening to recover the entire contents.

**GENE INFORMATION****Gene Name**

TFPI tissue factor pathway inhibitor (lipoprotein-associated coagulation inhibitor) [ Homo sapiens ]

**Official Symbol**

TFPI

**Synonyms**

TFPI; tissue factor pathway inhibitor (lipoprotein-associated coagulation inhibitor); LACI; tissue factor pathway inhibitor; EPI; extrinsic pathway inhibitor; TFI; TFPI1; anti-convertin;

**Gene ID**

7035

**mRNA Refseq**

NM\_001032281

**Protein Refseq**

NP\_001027452

**MIM**

152310

**UniProt ID**

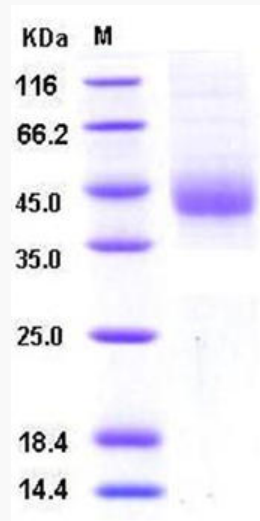
P10646

 Tel: 1-631-559-9269 1-516-512-3133

 Email: [info@creative-biomart.com](mailto:info@creative-biomart.com)  Fax: 1-631-938-8127

 45-1 Ramsey Road, Shirley, NY 11967, USA

**SDS-PAGE**



 Tel: 1-631-559-9269 1-516-512-3133

 Email: [info@creative-biomart.com](mailto:info@creative-biomart.com)  Fax: 1-631-938-8127

 45-1 Ramsey Road, Shirley, NY 11967, USA