

## Recombinant Human TFPI2 protein, His-tagged

Cat. No. TFPI2-876H Lot. No. (See product label)

### SPECIFICATION

<b>Product Overview</b>	Recombinant Human TFPI2 protein(NP_006519.1)(Asp23-Lys213.), fused with C-terminal His tag, was expressed in HEK293.
<b>Species</b>	Human
<b>Source</b>	HEK293
<b>ProteinLength</b>	Asp23-Lys213.
<b>Tag</b>	C-His
<b>Form</b>	Lyophilized from 0.22µm filtered solution in PBS (pH 7.4). Normally 5% trehalose is added as protectant before lyophilization.
<b>Bio-activity</b>	Measured by its ability to inhibit trypsin cleavage of a fluorogenic peptide substrate, the IC50 value is < 5 nM.
<b>Molecular Mass</b>	The protein has a predicted MW of 22.9 kDa. Due to glycosylation, the protein migrates to 30-35 kDa based on Tris-Bis PAGE result.
<b>Endotoxin</b>	Less than 1EU per µg by the LAL method.
<b>Purity</b>	> 95% as determined by Tris-Bis PAGE
<b>Storage</b>	Reconstituted protein stable at -80°C for 12 months, 4°C for 1 week. Use a manual

 Tel: 1-631-559-9269 1-516-512-3133

 Email: [info@creative-biomart.com](mailto:info@creative-biomart.com)  Fax: 1-631-938-8127

 45-1 Ramsey Road, Shirley, NY 11967, USA

defrost freezer and avoid repeated freeze-thaw cycles.

**Reconstitution**

Centrifuge tubes before opening. Reconstituting to a concentration more than 100 µg/ml is recommended. Dissolve the lyophilized protein in distilled water.

**GENE INFORMATION**

**Gene Name** TFPI2 tissue factor pathway inhibitor 2 [ Homo sapiens ]

**Official Symbol** TFPI2

**Synonyms** TFPI2; tissue factor pathway inhibitor 2; PP5; REF1; TFPI 2; placental protein 5; TFPI-2; FLJ21164;

**Gene ID** 7980

**mRNA Refseq** NM\_006528

**Protein Refseq** NP\_006519

**MIM** 600033

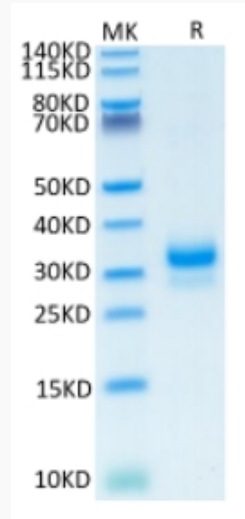
**UniProt ID** P48307

 Tel: 1-631-559-9269 1-516-512-3133

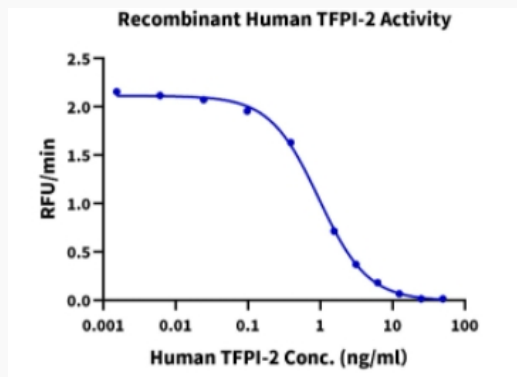
 Email: [info@creative-biomart.com](mailto:info@creative-biomart.com)  Fax: 1-631-938-8127

 45-1 Ramsey Road, Shirley, NY 11967, USA

**Tris-Bis PAGE**



**ELISA Data**



 Tel: 1-631-559-9269 1-516-512-3133

 Email: [info@creative-biomart.com](mailto:info@creative-biomart.com)  Fax: 1-631-938-8127

 45-1 Ramsey Road, Shirley, NY 11967, USA