

Recombinant Human TFPT protein, GST-tagged

Cat. No. TFPT-01H Lot. No. (See product label)

SPECIFICATION

Product Overview	Human TFPT full-length ORF (NP_037474.1, 1 a.a. - 253 a.a.) recombinant protein with GST-tag at N-terminal.
Species	Human
Source	Wheat Germ
Description	Predicted to enable DNA binding activity and protein kinase binding activity. Involved in apoptotic signaling pathway. Located in nucleoplasm.
Form	50 mM Tris-HCl, 10 mM reduced Glutathione, pH=8.0 in the elution buffer.
Molecular Mass	54.7 kDa
AA Sequence	MELEQREGTMAAVGFEEFSAPPGSELALPPLFGGHILESELETEVEFVSGGLGGSG LRERDEEEEAARGRRRRQRELNRRKYQALGRRCREIEQVNERVLNRLHQVQRITR RLQQERRFLMRVLDSDYRASQFTIVLEDEGSQGTDAPTPGNAENEPPEKETLS PPRRTAPPEPGSPAPGEGPSGRKRRRVPRDGRRAGNALTPELAPVQIKVEEDFG FEADEALDSSWVSRGPDKLLPYPTLASPASD
Purity	Glutathione Sepharose 4 Fast Flow
Applications	AP, Array, ELISA, WB-Re
Notes	Best use within three months from the date of receipt of this protein.

 Tel: 1-631-559-9269 1-516-512-3133

 Email: info@creative-biomart.com  Fax: 1-631-938-8127

 45-1 Ramsey Road, Shirley, NY 11967, USA

Storage Store at -80 centigrade. Aliquot to avoid repeated freezing and thawing.

GENE INFORMATION

Gene Name TFPT TCF3 fusion partner [Homo sapiens (human)]

Official Symbol TFPT

Synonyms FB1; INO80F; amida

Gene ID 29844

mRNA Refseq NM_013342.1

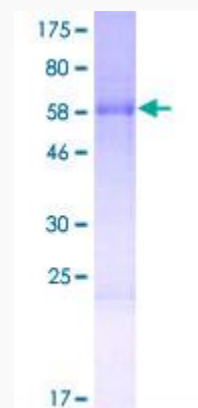
Protein Refseq NP_037474.1

MIM 609519

UniProt ID P0C1Z6

12.5% SDS-PAGE

Stained with
Coomassie Blue.



 Tel: 1-631-559-9269 1-516-512-3133

 Email: info@creative-biomart.com  Fax: 1-631-938-8127

 45-1 Ramsey Road, Shirley, NY 11967, USA