

## Active Recombinant Human TFRC protein, His-Avi-tagged, Biotinylated

Cat. No. TFRC-2029HB Lot. No. (See product label)

### SPECIFICATION

<b>Product Overview</b>	Biotinylated Recombinant Human TFRC protein(P02786)(Cys89-Phe760), fused with His tag and Avi tag, was expressed in HEK293.
<b>Species</b>	Human
<b>Source</b>	HEK293
<b>ProteinLength</b>	Cys89-Phe760
<b>Form</b>	Lyophilized from 0.22µm filtered solution in PBS (pH 7.4). Normally 8% trehalose is added as protectant before lyophilization.
<b>Bio-activity</b>	Immobilized Anti-Transferrin R Antibody at 1µg/ml (100µl/well) on the plate. Dose response curve for Biotinylated Human Transferrin R, His Tag with the EC50 of 41.4ng/ml determined by ELISA.
<b>Molecular Mass</b>	The protein has a predicted MW of 77.9 kDa. Due to glycosylation, the protein migrates to 80-85 kDa based on Tris-Bis PAGE result.
<b>Endotoxin</b>	Less than 1EU per µg by the LAL method.
<b>Purity</b>	> 95% as determined by Tris-Bis PAGE > 95% as determined by HPLC

 Tel: 1-631-559-9269 1-516-512-3133

 Email: [info@creative-biomart.com](mailto:info@creative-biomart.com)  Fax: 1-631-938-8127

 45-1 Ramsey Road, Shirley, NY 11967, USA

**Storage**

-20 to -80°C for 12 months as supplied from date of receipt.  
 -20 to -80°C for 3-6 months in unopened state after reconstitution.  
 2-8°C for 2-7 days after reconstitution.  
 Recommend to aliquot the protein into smaller quantities for optimal storage. Please avoid freeze-thaw cycles.

**Reconstitution**

Centrifuge tubes before opening. Reconstituting to a concentration more than 100 µg/ml is recommended. Dissolve the lyophilized protein in distilled water.

**Conjugation**                      Biotin

## GENE INFORMATION

**Gene Name**                      [TFRC transferrin receptor \(p90, CD71\) \[ Homo sapiens \]](#)

**Official Symbol**                [TFRC](#)

**Synonyms**

TFRC; transferrin receptor (p90, CD71); transferrin receptor protein 1; CD71; TFR1; T9; TR; TFR; p90; TRFR;

**Gene ID**                            [7037](#)

**mRNA Refseq**                    [NM\\_001128148](#)

**Protein Refseq**                    [NP\\_001121620](#)

**MIM**                                 [190010](#)

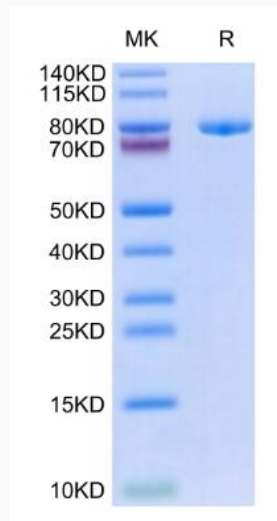
**UniProt ID**                         [P02786](#)

 Tel: 1-631-559-9269    1-516-512-3133

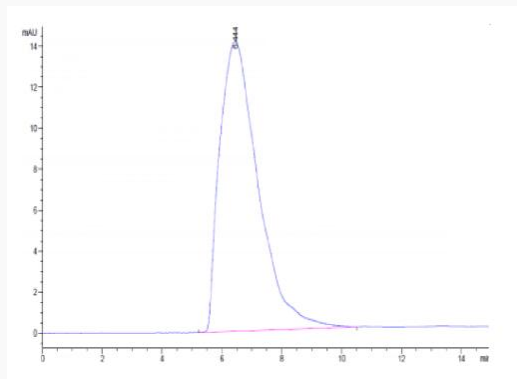
 Email: [info@creative-biomart.com](mailto:info@creative-biomart.com)     Fax: 1-631-938-8127

 45-1 Ramsey Road, Shirley, NY 11967, USA

**SDS-PAGE**



**SEC-HPLC**

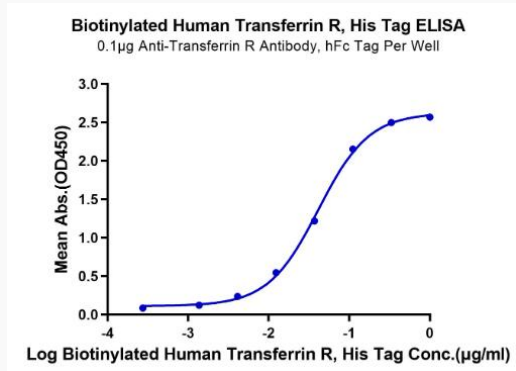


 Tel: 1-631-559-9269 1-516-512-3133

 Email: [info@creative-biomart.com](mailto:info@creative-biomart.com)  Fax: 1-631-938-8127

 45-1 Ramsey Road, Shirley, NY 11967, USA

ELISA Data



 Tel: 1-631-559-9269 1-516-512-3133

 Email: [info@creative-biomart.com](mailto:info@creative-biomart.com)  Fax: 1-631-938-8127

 45-1 Ramsey Road, Shirley, NY 11967, USA