

Recombinant Human TGF protein

Cat. No. TGF-137H Lot. No. (See product label)

SPECIFICATION

Product Overview	Recombinant Mature TGF Beta1 Protein is expressed from Expi293 with no Tag. It contains Ala279-Ser390.
Species	Human
Source	HEK293
ProteinLength	Ala279-Ser390
Description	TGF-beta 1(transforming growth factor beta 1) is one of three closely related mammalian members of the large TGF-beta superfamily that share a characteristic cystine knot structure. TGF-beta 1, -2 and -3 are highly pleiotropic cytokines that are proposed to act as cellular switches that regulate processes such as immune function, proliferation and epithelial-mesenchymal transition. Transforming growth factor beta-1 is multifunctional protein that regulates the growth and differentiation of various cell types and is involved in various processes, such as normal development, immune function, microglia function and responses to neurodegeneration.
Form	Supplied as 0.22µm filtered solution in 50mM Glycine150mM NaCl, pH2.5.
Molecular Mass	The protein has a predicted MW of 13.2 KDa. Due to glycosylation, the protein migrates to 14-15KDa based on Bis-Tris PAGE result.
Endotoxin	Less than 1 EU per µg by the LAL method.

 Tel: 1-631-559-9269 1-516-512-3133

 Email: info@creative-biomart.com  Fax: 1-631-938-8127

 45-1 Ramsey Road, Shirley, NY 11967, USA

Purity >95% as determined by Bis-Tris PAGE

Storage The product should be stored at -70°C. Please do not repeated freeze-thaw cycles.

GENE INFORMATION

Gene Name TGFB1

Official Symbol TGFB1

Synonyms Transforming growth factor beta-1, CEDLAP; DPD1; TGF beta1; TGFB; TGFB1; TGF-beta 1 protein; TGFbeta 1; TGF-beta 1; TGFbeta; TGF-beta-1; transforming growth factor beta-1;

Gene ID 7040

mRNA Refseq NM_000660.7

Protein Refseq NP_000651.3

MIM 190180

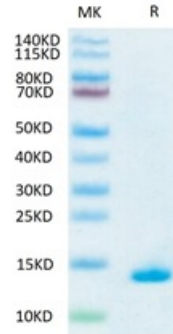
UniProt ID P01137

 Tel: 1-631-559-9269 1-516-512-3133

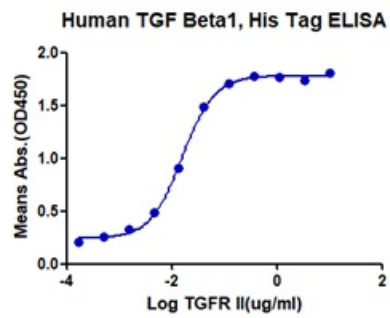
 Email: info@creative-biomart.com  Fax: 1-631-938-8127

 45-1 Ramsey Road, Shirley, NY 11967, USA

**Tris-Bis PAGE of
TGF-137H**



**ELISA data of TGF-
137H**



 Tel: 1-631-559-9269 1-516-512-3133

 Email: info@creative-biomart.com  Fax: 1-631-938-8127

 45-1 Ramsey Road, Shirley, NY 11967, USA