

# Recombinant Human TGFB1 Protein, Mature chain, Tag Free, Biotinylated

Cat. No. TGFB1-001H Lot. No. (See product label)

## SPECIFICATION

**Product Overview** Recombinant-Biotinylated Human TGF Beta-1 protein was developed from HEK293.

**Species** Human

**Source** HEK293

**ProteinLength** Mature chain

### Description

This gene encodes a secreted ligand of the TGF-beta (transforming growth factor-beta) superfamily of proteins. Ligands of this family bind various TGF-beta receptors leading to recruitment and activation of SMAD family transcription factors that regulate gene expression. The encoded preproprotein is proteolytically processed to generate a latency-associated peptide (LAP) and a mature peptide, and is found in either a latent form composed of a mature peptide homodimer, a LAP homodimer, and a latent TGF-beta binding protein, or in an active form consisting solely of the mature peptide homodimer. The mature peptide may also form heterodimers with other TGFB family members. This encoded protein regulates cell proliferation, differentiation and growth, and can modulate expression and activation of other growth factors including interferon gamma and tumor necrosis factor alpha. This gene is frequently upregulated in tumor cells, and mutations in this gene result in Camurati-Engelmann disease.

**Conjugation/Label** Biotin

 Tel: 1-631-559-9269 1-516-512-3133

 Email: [info@creative-biomart.com](mailto:info@creative-biomart.com)  Fax: 1-631-938-8127

 45-1 Ramsey Road, Shirley, NY 11967, USA

<b>Form</b>	Lyophilised
<b>Endotoxin</b>	Endotoxin level was found to be less than 0.1 ng/μg (1 EU/μg).
<b>Notes</b>	FOR RESEARCH USE ONLY (RUO).
<b>Storage</b>	Upon reconstitution, this cytokine can be stored in working aliquots at 2 to 8 centigrade for one month, or at -20 centigrade for six months. Avoid repeated freeze/thaw cycles.
<b>Storage Buffer</b>	Lyophilised from 0.2 μm filtered PBS solution pH 7.4.
<b>Reconstitution</b>	Upon receipt a quick spin of the vial followed by reconstitution in distilled water to a concentration not less than 0.1 mg/mL. This solution can then be diluted into other buffers.
<b>Conjugation</b>	Biotin

## GENE INFORMATION

<b>Gene Name</b>	TGFB1 transforming growth factor, beta 1 [ Homo sapiens (human) ]
<b>Official Symbol</b>	TGFB1
<b>Synonyms</b>	TGFB1; transforming growth factor, beta 1; DPD1, TGFB; transforming growth factor beta-1; Camurati Engelmann disease; CED; TGFbeta; TGF-beta-1; TGF-beta 1 protein; latency-associated peptide; LAP; DPD1; TGFB;
<b>Gene ID</b>	7040
<b>mRNA Refseq</b>	NM_000660

 Tel: 1-631-559-9269 1-516-512-3133

 Email: [info@creative-biomart.com](mailto:info@creative-biomart.com)  Fax: 1-631-938-8127

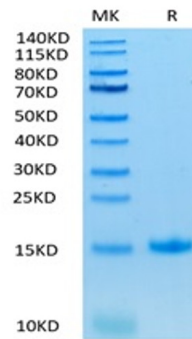
 45-1 Ramsey Road, Shirley, NY 11967, USA

**Protein Refseq**      NP\_000651

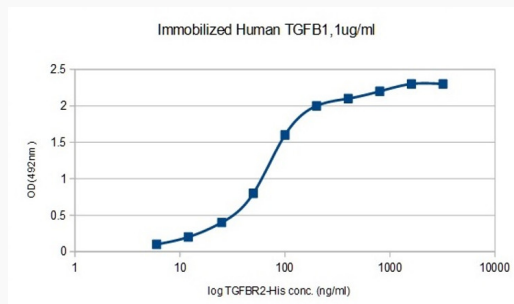
**MIM**                    190180

**UniProt ID**            P01137

1 µg loaded Tris-Bis  
PAGE under  
reducing condition.  
The purity is greater  
than 95%.



**Immobilized  
Biotinylated Human  
TGF Beta 1 at 1  
µg/mL (100 µL/Well).  
Response curve for  
TGFR2 with a linear  
range of 2-100 ng/mL  
was determined by  
ELISA**



Tel: 1-631-559-9269    1-516-512-3133

Email: [info@creative-biomart.com](mailto:info@creative-biomart.com)    Fax: 1-631-938-8127

45-1 Ramsey Road, Shirley, NY 11967, USA