

Recombinant Human TGFB1 protein, Avi-tagged, Biotinylated

Cat. No. TGFB1-137HB Lot. No. (See product label)

SPECIFICATION

Product Overview	Biotinylated Recombinant Human TGFB1 protein(P01137)(Ala279-Ser390), fused with C-terminal Avi tag, was expressed in HEK293.
Species	Human
Source	HEK293
ProteinLength	Ala279-Ser390
Tag	C-Avi
Conjugation/Label	Biotin
Form	Lyophilized from 0.22µm filtered solution in 50mM Glycine, 150mM NaCl (pH 2.5). Normally 8% trehalose is added as protectant before lyophilization.
Bio-activity	Immobilized Human TGF-beta RII, hFc Tag at 1µg/ml (100µl/well) on the plate. Dose response curve for Biotinylated Human Mature TGF beta 1, Avi Tag with the EC50 of 9.9ng/ml determined by ELISA.
Molecular Mass	The protein has a predicted MW of 13.2 kDa. Due to glycosylation, the protein migrates to 15-17 kDa based on Tris-Bis PAGE result.
Endotoxin	Less than 1EU per µg by the LAL method.

 Tel: 1-631-559-9269 1-516-512-3133

 Email: info@creative-biomart.com  Fax: 1-631-938-8127

 45-1 Ramsey Road, Shirley, NY 11967, USA

Purity	> 95% as determined by Tris-Bis PAGE
Storage	Reconstituted protein stable at -80°C for 12 months, 4°C for 1 week. Use a manual defrost freezer and avoid repeated freeze-thaw cycles.
Reconstitution	Centrifuge tubes before opening. Reconstituting to a concentration more than 100 µg/ml is recommended. Dissolve the lyophilized protein in 50mM Glycine, 150mM NaCl (pH 2.5).
Conjugation	Biotin

GENE INFORMATION

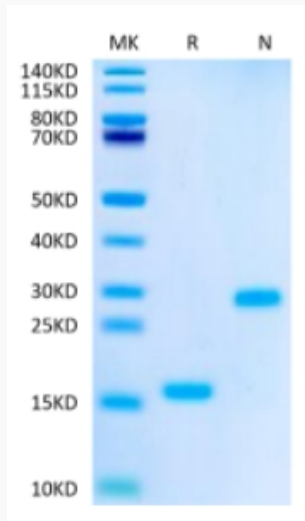
Gene Name	TGFB1 transforming growth factor, beta 1 [Homo sapiens]
Official Symbol	TGFB1
Synonyms	TGFB1; transforming growth factor, beta 1; DPD1, TGFB; transforming growth factor beta-1; Camurati Engelmann disease; CED; TGFbeta; TGF-beta-1; TGF-beta 1 protein; latency-associated peptide; LAP; DPD1; TGFB;
Gene ID	7040
mRNA Refseq	NM_000660
Protein Refseq	NP_000651
MIM	190180
UniProt ID	P01137

 Tel: 1-631-559-9269 1-516-512-3133

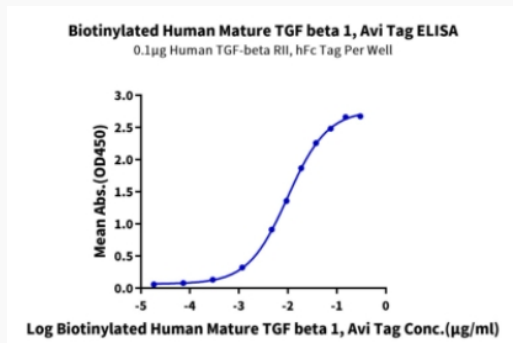
 Email: info@creative-biomart.com  Fax: 1-631-938-8127

 45-1 Ramsey Road, Shirley, NY 11967, USA

Tris-Bis PAGE



ELISA Data



 Tel: 1-631-559-9269 1-516-512-3133

 Email: info@creative-biomart.com  Fax: 1-631-938-8127

 45-1 Ramsey Road, Shirley, NY 11967, USA