

Active Recombinant Full Length Human TGFB1 Protein, C-Flag-tagged

Cat. No. TGFB1-146HFL Lot. No. (See product label)

SPECIFICATION

Product Overview

Recombinant Full Length Human TGFB1 Protein, fused to Flag-tag at C-terminus, was expressed in Mammalian cells.

Species

Human

Source

Mammalian Cells

Description

This gene encodes a secreted ligand of the TGF-beta (transforming growth factor-beta) superfamily of proteins. Ligands of this family bind various TGF-beta receptors leading to recruitment and activation of SMAD family transcription factors that regulate gene expression. The encoded preproprotein is proteolytically processed to generate a latency-associated peptide (LAP) and a mature peptide, and is found in either a latent form composed of a mature peptide homodimer, a LAP homodimer, and a latent TGF-beta binding protein, or in an active form consisting solely of the mature peptide homodimer. The mature peptide may also form heterodimers with other TGFB family members. This encoded protein regulates cell proliferation, differentiation and growth, and can modulate expression and activation of other growth factors including interferon gamma and tumor necrosis factor alpha. This gene is frequently upregulated in tumor cells, and mutations in this gene result in Camurati-Engelmann disease.

Form

25 mM Tris HCl, pH 7.3, 100 mM glycine, 10% glycerol.

 Tel: 1-631-559-9269 1-516-512-3133

 Email: info@creative-biomart.com  Fax: 1-631-938-8127

 45-1 Ramsey Road, Shirley, NY 11967, USA

Bio-activity	Ex vivo tissue treatment
Molecular Mass	28.4 kDa
AA Sequence	<p>MPPSGLRLLLLLLPLLWLLVLTTPGRPAAGLSTCKTIDMELVKRKRIEAIRGQILSKLRLA SPPSQGEVPP GPLPEAVLALYNSTRDRVAGESAEPEPEPEADYYAKEVTRVLMVET HNEIYDKFKQSTHSIYMFFNTSEL REAVPEPVLLSRAELRLLRLKLVQHVELYQKY SNNSWRYLSNRLLAPSDSPEWLSFDVTGVVRQWLSR GGEIEGFRLSAHCSCDSRD NTLQVDINGFTTGRRGDLATIHGMNRPFLLMATPLERAQHLQSSRHRRAL DTNYC FSSTEKNCCVRQLYIDFRKDLGWKWIHEPKGYHANFCLGPCPYIWSLDTQYSKVLAL YNQHNPQA SAAPCCVPQALEPLPIVYYVGRKPKVEQLSNMIVRSCKCSTRTRPLEQKLISEEDLAA NDILDYKDDDDKV</p>
Purity	> 80% as determined by SDS-PAGE and Coomassie blue staining.
Stability	Stable for 12 months from the date of receipt of the product under proper storage and handling conditions. Avoid repeated freeze-thaw cycles.
Storage	Store at -80 centigrade.
Concentration	>50 ug/mL as determined by microplate BCA method.
Preparation	Recombinant protein was captured through anti-DDK affinity column followed by conventional chromatography steps.
Protein Families	Druggable Genome, ES Cell Differentiation/IPS, Secreted Protein, Transcription Factors
Protein Pathways	Cell cycle, Chronic myeloid leukemia, Colorectal cancer, Cytokine-cytokine receptor

 Tel: 1-631-559-9269 1-516-512-3133

 Email: info@creative-biomart.com  Fax: 1-631-938-8127

 45-1 Ramsey Road, Shirley, NY 11967, USA

interaction, Dilated cardiomyopathy, Hypertrophic cardiomyopathy (HCM), MAPK signaling pathway, Pancreatic cancer, Pathways in cancer, Renal cell carcinoma, TGF-beta signaling pathway

Full Length Full L.

GENE INFORMATION

Gene Name TGFB1 transforming growth factor beta 1 [Homo sapiens (human)]

Official Symbol TGFB1

Synonyms CED; LAP; DPD1; TGFB; IBDIMDE; TGFbeta; TGF-beta1

Gene ID 7040

mRNA Refseq NM_000660.7

Protein Refseq NP_000651.3

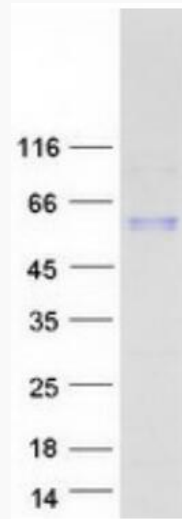
MIM 190180

UniProt ID P01137

 Tel: 1-631-559-9269 1-516-512-3133

 Email: info@creative-biomart.com  Fax: 1-631-938-8127

 45-1 Ramsey Road, Shirley, NY 11967, USA



Coomassie blue staining of purified TGFB1 protein.

 Tel: 1-631-559-9269 1-516-512-3133

 Email: info@creative-biomart.com  Fax: 1-631-938-8127

 45-1 Ramsey Road, Shirley, NY 11967, USA