

# Recombinant Human TGFB1 Protein, Leu30-Arg278, C33S, N-His-Avi tagged, Biotinylated

Cat. No. TGFB1-158H Lot. No. (See product label)

## SPECIFICATION

### Product Overview

Recombinant human LAP (TGF beta 1)-N-His-Avi protein was developed from HEK293 and has a target region of N-His-Avi.

### Species

Human

### Source

HEK293

### ProteinLength

Leu30-Arg278, C33S

### Description

This gene encodes a secreted ligand of the TGF-beta (transforming growth factor-beta) superfamily of proteins. Ligands of this family bind various TGF-beta receptors leading to recruitment and activation of SMAD family transcription factors that regulate gene expression. The encoded preproprotein is proteolytically processed to generate a latency-associated peptide (LAP) and a mature peptide, and is found in either a latent form composed of a mature peptide homodimer, a LAP homodimer, and a latent TGF-beta binding protein, or in an active form consisting solely of the mature peptide homodimer. The mature peptide may also form heterodimers with other TGFB family members. This encoded protein regulates cell proliferation, differentiation and growth, and can modulate expression and activation of other growth factors including interferon gamma and tumor necrosis factor alpha. This gene is frequently upregulated in tumor cells, and mutations in this gene result in Camurati-Engelmann disease.

 Tel: 1-631-559-9269 1-516-512-3133

 Email: [info@creative-biomart.com](mailto:info@creative-biomart.com)  Fax: 1-631-938-8127

 45-1 Ramsey Road, Shirley, NY 11967, USA

<b>Conjugation/Label</b>	Biotin
<b>Form</b>	Lyophilised
<b>Endotoxin</b>	Endotoxin level was found to be less than 0.1 ng/μg (1 EU/μg).
<b>Notes</b>	FOR RESEARCH USE ONLY (RUO).
<b>Storage</b>	The lyophilized protein is stable for at least 1 year from date of receipt at -20 centigrade.
<b>Storage Buffer</b>	Lyophilised from 0.2 μm filtered PBS solution pH 7.4. Upon receipt centrifuge vial to ensure maximal product extraction, recommended: 20 sec, 5K RPM
<b>Conjugation</b>	Biotin

## GENE INFORMATION

<b>Gene Name</b>	TGFB1 transforming growth factor, beta 1 [ Homo sapiens (human) ]
<b>Official Symbol</b>	TGFB1
<b>Synonyms</b>	TGFB1; transforming growth factor, beta 1; DPD1, TGFB; transforming growth factor beta-1; Camurati Engelmann disease; CED; TGFbeta; TGF-beta-1; TGF-beta 1 protein; latency-associated peptide; LAP; DPD1; TGFB;
<b>Gene ID</b>	7040
<b>mRNA Refseq</b>	NM_000660
<b>Protein Refseq</b>	NP_000651

 Tel: 1-631-559-9269 1-516-512-3133

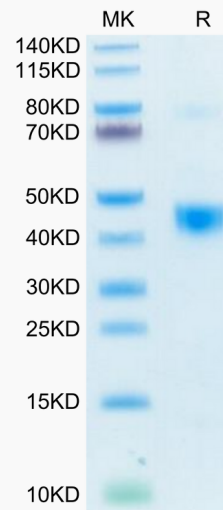
 Email: [info@creative-biomart.com](mailto:info@creative-biomart.com)  Fax: 1-631-938-8127

 45-1 Ramsey Road, Shirley, NY 11967, USA

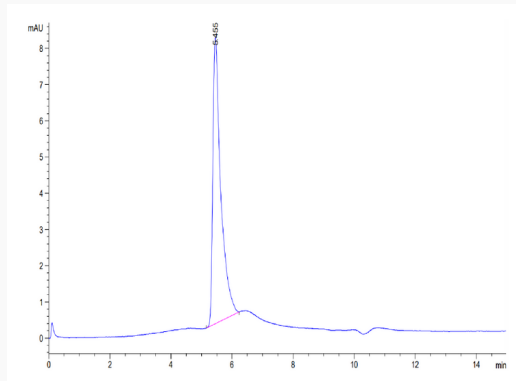
**MIM** 190180

**UniProt ID** P01137

**Biotinylated Human LAP (TGF beta 1) on Tris-Bis PAGE under reduced condition. The purity is greater than 95%.**



**The purity of Biotinylated Human LAP (TGF beta 1) is greater than 95% as determined by SEC-HPLC.**



**Immobilized Biotinylated Human LAP (TGF beta 1),**


Tel: 1-631-559-9269 1-516-512-3133

Email: [info@creative-biomart.com](mailto:info@creative-biomart.com) Fax: 1-631-938-8127


45-1 Ramsey Road, Shirley, NY 11967, USA

**His Tag at 0.5 µg/mL  
(100 µL/Well) on the  
plate. Dose response  
curve for Human  
TGF-beta RII, hFc  
Tag with the EC50 of  
23.8 ng/mL  
determined by  
ELISA.**

**Immobilized  
Biotinylated Human  
LAP (TGF beta 1),  
His Tag at 0.5 µg/mL  
(100 µL/Well) on the  
plate. Dose response  
curve for Human  
TGF-beta RII, hFc  
Tag with the EC50 of  
23.8 ng/mL  
determined by  
ELISA.**

 Tel: 1-631-559-9269 1-516-512-3133

 Email: [info@creative-biomart.com](mailto:info@creative-biomart.com)  Fax: 1-631-938-8127

 45-1 Ramsey Road, Shirley, NY 11967, USA