

Active Recombinant Human TGFB1 protein, His-tagged

Cat. No. TGFB1-2682H Lot. No. (See product label)

SPECIFICATION

Product Overview	Active Recombinant Human Latent TGF-beta 1(C33S) Protein is produced by HEK293 expression system. The target protein is expressed with sequence (Leu30-Ser390(C33S)) of human TGF-beta 1 (Accession #NP_000651.3) fused with an 8xHis tag at the N-terminus.
Species	Human
Source	HEK293
ProteinLength	Leu30-Ser390(C33S)
Form	Lyophilized from a 0.22 µm filtered solution of PBS, pH 7.4.
Bio-activity	<p>1.Measured by its ability to inhibit cell proliferation of TF-1 human erythroleukemic cells. The ED50 for this effect is typically 0.5-2 ng/mL.</p> <p>2.Measured by its binding ability in a functional ELISA. Immobilized recombinant human TGFB1 at 2 µg/mL (100 µL/well) can bind recombinant human TGFBR2 with a linear range of 1-5 ng/mL.</p>
Molecular Mass	13&42&60kDa
Endotoxin	< 0.1 EU/µg of the protein by LAL method.
Purity	> 95% by SDS-PAGE.

 Tel: 1-631-559-9269 1-516-512-3133

 Email: info@creative-biomart.com  Fax: 1-631-938-8127

 45-1 Ramsey Road, Shirley, NY 11967, USA

Storage Store the lyophilized protein at -20°C to -80 °C for long term.
After reconstitution, the protein solution is stable at -20 °C for 3 months, at 2-8 °C for up to 1 week.

Reconstitution Reconstitute to a concentration of 0.1-0.5 mg/mL in sterile distilled water.

GENE INFORMATION

Gene Name TGFB1 transforming growth factor, beta 1 [Homo sapiens]

Official Symbol TGFB1

Synonyms TGFB1; transforming growth factor, beta 1; DPD1, TGFB; transforming growth factor beta-1; Camurati Engelmann disease; CED; TGFbeta; TGF-beta-1; TGF-beta 1 protein; latency-associated peptide; LAP; DPD1; TGFB;

Gene ID 7040

mRNA Refseq NM_000660

Protein Refseq NP_000651

MIM 190180

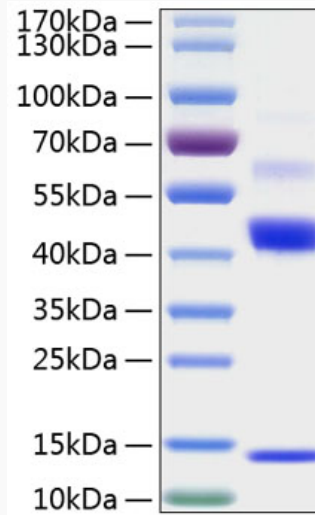
UniProt ID P01137

 Tel: 1-631-559-9269 1-516-512-3133

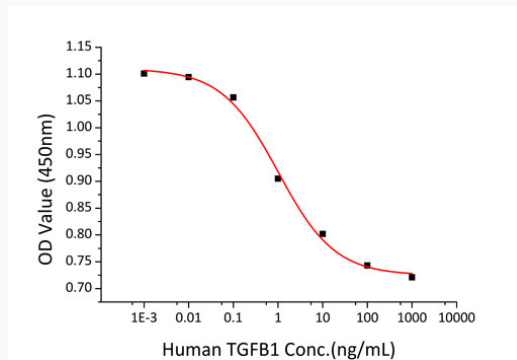
 Email: info@creative-biomart.com  Fax: 1-631-938-8127

 45-1 Ramsey Road, Shirley, NY 11967, USA

SDS-PAGE



Bio-activity



 Tel: 1-631-559-9269 1-516-512-3133

 Email: info@creative-biomart.com  Fax: 1-631-938-8127

 45-1 Ramsey Road, Shirley, NY 11967, USA