

Active Recombinant Human TGFB1 Protein (Ala279-Ser390), C-His tagged, Animal-free, Carrier-free

Cat. No. TGFB1-286H Lot. No. (See product label)

SPECIFICATION

Product Overview

Recombinant Human TGFB1 Protein (Ala279-Ser390) with C-His tag was expressed in E. coli and Animal-free as well as Carrier-free.

Species

Human

Source

E.coli

ProteinLength

Ala279-Ser390

Description

The transforming Growth Factors beta (TGF beta) family of cytokines are ubiquitous, multifunctional, and essential to survival. They play the central roles in growth, development, inflammation, repair, and host immunity. The mammalian TGF beta isoforms (TGF beta 1, beta 2 and beta 3) are secreted as potential precursors and possess a variety of cell surface receptors and produces at least two mediate signal transductions.

Form

Lyophilized

Bio-activity

Measure by its ability to inhibit the IL-4 dependent proliferation in HT-2 cells. The ED50 for this effect is < 0.1 ng/mL. The specific activity of recombinant human TGF beat 1 is approximately $>5 \times 10^7$ IU/mg.

Measure by its ability to induce proliferation in MCF-7 cells The ED50 for this effect is < 3.2 ng/mL.

 Tel: 1-631-559-9269 1-516-512-3133

 Email: info@creative-biomart.com  Fax: 1-631-938-8127

 45-1 Ramsey Road, Shirley, NY 11967, USA

Molecular Mass	The protein has a calculated MW of 13.7 kDa. The protein migrates as 13 kDa under reducing condition (SDS-PAGE analysis).
Endotoxin	< 0.1 EU/μg of the protein by the LAL method.
Purity	>98% as determined by SDS-PAGE analysis.
Storage	This product is stable after storage at: -20 centigrade for 12 months in lyophilized state from date of receipt. -20 or -80 centigrade for 1 month under sterile conditions after reconstitution. Avoid repeated freeze/thaw cycles.
Storage Buffer	Lyophilized from a 0.2 μm filtered solution containing 20 mM sodium citrate and 0.2 M NaCl, pH 4.5.
Reconstitution	It is recommended to reconstitute the lyophilized protein in sterile H ₂ O to a concentration not less than 200 μg/mL and incubate the stock solution for at least 20 min to ensure sufficient re-dissolved. In some experiments, it recommends to add 10 mM HCl when reconstitute lyophilized protein.
Shipping	The product is shipped with polar packs. Upon receipt, store it immediately at -20 centigrade or lower for long term storage.

GENE INFORMATION

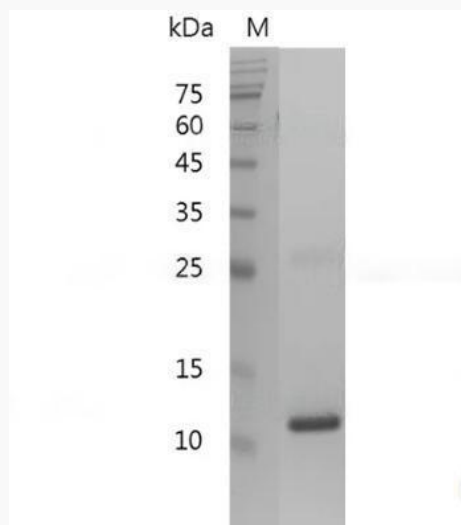
Gene Name	TGFB1 transforming growth factor, beta 1 [Homo sapiens (human)]
Official Symbol	TGFB1
Synonyms	TGFB1; transforming growth factor, beta 1; DPD1, TGFB; transforming growth factor beta-1; Camurati Engelmann disease; CED; TGFbeta; TGF-beta-1; TGF-beta 1

 Tel: 1-631-559-9269 1-516-512-3133

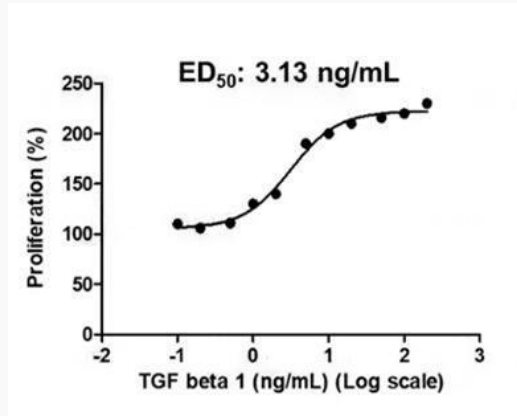
 Email: info@creative-biomart.com  Fax: 1-631-938-8127

 45-1 Ramsey Road, Shirley, NY 11967, USA

protein; latency-associated peptide; LAP; DPD1; TGFB;

Gene ID 7040**mRNA Refseq** NM_000660**Protein Refseq** NP_000651**MIM** 190180**UniProt ID** P01137**SDS-PAGE analysis
of recombinant
human TGF beta 1.** Tel: 1-631-559-9269 1-516-512-3133 Email: info@creative-biomart.com  Fax: 1-631-938-8127 45-1 Ramsey Road, Shirley, NY 11967, USA

Activity



Human TGF Beta 1, His Tag, E. coli (LDG051PHE) induced MCF-7 cell proliferation, with the ED50 at 3.13 ng/mL.

 Tel: 1-631-559-9269 1-516-512-3133

 Email: info@creative-biomart.com  Fax: 1-631-938-8127

 45-1 Ramsey Road, Shirley, NY 11967, USA