

Recombinant Active Human TGFB1 Protein, His-tagged(C-ter)

Cat. No. TGFB1-299H Lot. No. (See product label)

SPECIFICATION

Product Overview	Recombinant Active Human TGFB1 Protein with His tag (C-ter) was expressed in E. coli.
Species	Human
Source	E.coli
Description	<p>This gene encodes a member of the transforming growth factor beta (TGFB) family of cytokines, which are multifunctional peptides that regulate proliferation, differentiation, adhesion, migration, and other functions in many cell types. Many cells have TGFB receptors, and the protein positively and negatively regulates many other growth factors. The secreted protein is cleaved into a latency-associated peptide (LAP) and a mature TGFB1 peptide, and is found in either a latent form composed of a TGFB1 homodimer, a LAP homodimer, and a latent TGFB1-binding protein, or in an active form composed of a TGFB1 homodimer. The mature peptide may also form heterodimers with other TGFB family members. This gene is frequently upregulated in tumor cells, and mutations in this gene result in Camurati-Engelmann disease.[provided by RefSeq, Oct 2009]</p>
Form	Powder
Bio-activity	Determined by its ability to inhibit the IL-4 dependent proliferation in HT-2 cells. The ED50 for this effect is <0.1 ng/mL. The specific activity of recombinant human TGF beat 1 is approximately >5 x 10 ⁷ U/mg. Determined by its ability to induce

 Tel: 1-631-559-9269 1-516-512-3133

 Email: info@creative-biomart.com  Fax: 1-631-938-8127

 45-1 Ramsey Road, Shirley, NY 11967, USA

proliferation in MCF-7 cells The ED50 for this effect is <3.2 ng/mL.

AA Sequence

MALDTNYCFSSTEKNCCVRQLYIDFRKDLGWKWIHEPKGYHANFCLGPCPYIWSLD
TQYSKVLALYNQHNP GASAAPCCVPQALEPLPIVYYVGRKPKVEQLSNMIVRSCKCS

Endotoxin

Endotoxin level is less than 0.1 EU/μg of the protein, as determined by the LAL test.

Purity

> 98% (by SDS-PAGE)

Applications

SDS-PAGE

Notes

For laboratory research only, not for drug, diagnostic or other use.

Storage

Lyophilized protein should be stored at -20°C. After reconstitution, aliquot and store at -20°C or -80°C for up to one month. Storage in frost free freezers is not recommended. Avoid repeated freeze/thaw cycles. Suggest spin the vial prior to opening.

Storage Buffer

PBS (pH 8.0)

Reconstitution

It is recommended to reconstitute the lyophilized protein in sterile water to a concentration not less than 100 μg/mL and incubate the stock solution for at least 20 min at room temperature to make sure the protein is dissolved completely.

GENE INFORMATION

Gene Name

TGFB1 transforming growth factor, beta 1 [Homo sapiens]

Official Symbol

TGFB1

Synonyms

TGFB1; transforming growth factor, beta 1; DPD1, TGFB; transforming growth factor

 Tel: 1-631-559-9269 1-516-512-3133

 Email: info@creative-biomart.com  Fax: 1-631-938-8127

 45-1 Ramsey Road, Shirley, NY 11967, USA

beta-1; Camurati Engelmann disease; CED; TGFbeta; TGF-beta-1; TGF-beta 1 protein; latency-associated peptide; LAP; DPD1; TGFB;

Gene ID 7040

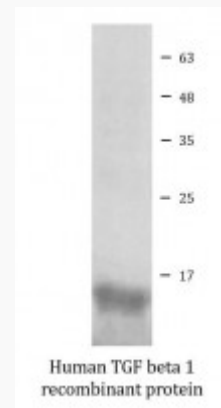
mRNA Refseq NM_000660

Protein Refseq NP_000651

MIM 190180

UniProt ID P01137

SDS-PAGE



 Tel: 1-631-559-9269 1-516-512-3133

 Email: info@creative-biomart.com  Fax: 1-631-938-8127

 45-1 Ramsey Road, Shirley, NY 11967, USA