

## Recombinant Active Pig TGFB1 Protein, His-tagged(C-ter)

**Cat. No.** TGFB1-301P    **Lot. No.** (See product label)

### SPECIFICATION

<b>Product Overview</b>	Recombinant Active Pig TGFB1 Protein with His tag (C-ter) was expressed in E. coli.
<b>Species</b>	Pig
<b>Source</b>	E.coli
<b>Description</b>	<p>This gene encodes a member of the transforming growth factor beta (TGFB) family of cytokines, which are multifunctional peptides that regulate proliferation, differentiation, adhesion, migration, and other functions in many cell types. Many cells have TGFB receptors, and the protein positively and negatively regulates many other growth factors. The secreted protein is cleaved into a latency-associated peptide (LAP) and a mature TGFB1 peptide, and is found in either a latent form composed of a TGFB1 homodimer, a LAP homodimer, and a latent TGFB1-binding protein, or in an active form composed of a TGFB1 homodimer. The mature peptide may also form heterodimers with other TGFB family members. This gene is frequently upregulated in tumor cells, and mutations in this gene result in Camurati-Engelmann disease.[provided by RefSeq, Oct 2009]</p>
<b>Form</b>	Powder
<b>Bio-activity</b>	Determined by its ability to inhibit IL-4-induce proliferation in HT-2 cells. The ED50 for this effect is < 0.1 ng/mL.
<b>AA Sequence</b>	MALDTNYCFSSTEKNCCVRQLYIDFRKDLGWKWIHEPKGYHANFCLGPCPYIWSLD TQYSKVLALYNQHNP GASAAPCCVPQALEPLPIVYVYVGRKPKVEQLSNMIVRSCKCS

 Tel: 1-631-559-9269    1-516-512-3133

 Email: [info@creative-biomart.com](mailto:info@creative-biomart.com)     Fax: 1-631-938-8127

 45-1 Ramsey Road, Shirley, NY 11967, USA

<b>Endotoxin</b>	Endotoxin level is less than 0.1 EU/μg of the protein, as determined by the LAL test.
<b>Purity</b>	> 98% (by SDS-PAGE)
<b>Applications</b>	SDS-PAGE
<b>Notes</b>	For laboratory research only, not for drug, diagnostic or other use.
<b>Storage</b>	Lyophilized protein should be stored at -20°C. After reconstitution, aliquot and store at -20°C or -80°C for up to one month. Storage in frost free freezers is not recommended. Avoid repeated freeze/thaw cycles. Suggest spin the vial prior to opening.
<b>Storage Buffer</b>	20 mM Sodium citrate (pH 4.5) and 0.2 M NaCl.
<b>Reconstitution</b>	It is recommended to reconstitute the lyophilized protein in sterile water to a concentration not less than 100 μg/mL and incubate the stock solution for at least 20 min at room temperature to make sure the protein is dissolved completely.

## GENE INFORMATION

<b>Gene Name</b>	TGFB1 transforming growth factor, beta 1 [ <i>Sus scrofa</i> ]
<b>Official Symbol</b>	TGFB1
<b>Synonyms</b>	TGFB1; transforming growth factor, beta 1; transforming growth factor beta-1; transforming growth factor-beta-1; transforming growth factor, beta 1 (Camurati-Engelmann disease); TGF-BETA-1;
<b>Gene ID</b>	397078

 Tel: 1-631-559-9269 1-516-512-3133

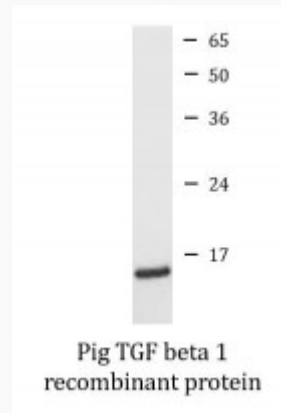
 Email: [info@creative-biomart.com](mailto:info@creative-biomart.com)  Fax: 1-631-938-8127

 45-1 Ramsey Road, Shirley, NY 11967, USA

mRNA Refseq [NM\\_214015](#)

Protein Refseq [NP\\_999180](#)

**SDS-PAGE**



 Tel: 1-631-559-9269 1-516-512-3133

 Email: [info@creative-biomart.com](mailto:info@creative-biomart.com)  Fax: 1-631-938-8127

 45-1 Ramsey Road, Shirley, NY 11967, USA