

Recombinant Human TGFB1 protein, Avi-tagged

Cat. No. TGFB1-364H Lot. No. (See product label)

SPECIFICATION

Product Overview	Human Mature TGF beta 1 Protein is expressed from mammalian with Avi Tag at the C-terminal. It contains Ala279-Ser390.
Species	Human
Source	HEK293
ProteinLength	Ala279-Ser390
Description	TGF-beta 1 (transforming growth factor beta 1) is one of three closely related mammalian members of the large TGF-beta superfamily that share a characteristic cystine knot structure. TGF-beta 1, -2 and -3 are highly pleiotropic cytokines that are proposed to act as cellular switches that regulate processes such as immune function, proliferation and epithelial-mesenchymal transition. Transforming growth factor beta-1 is multifunctional protein that regulates the growth and differentiation of various cell types and is involved in various processes, such as normal development, immune function, microglia function and responses to neurodegeneration.
Form	Lyophilized from 0.22um filtered solution in 50mM Glycine, 150mM NaCl (pH2.5).
Molecular Mass	The protein has a predicted MW of 13.2 KDa. Due to glycosylation, the protein migrates to 13-14KDa based on Bis-Tris PAGE result.
Endotoxin	Less than 0.01EU per ug by the LAL method.

 Tel: 1-631-559-9269 1-516-512-3133

 Email: info@creative-biomart.com  Fax: 1-631-938-8127

 45-1 Ramsey Road, Shirley, NY 11967, USA

Purity > 95% as determined by SDS-PAGE

Storage The product should be stored at -70°C or -20°C.

GENE INFORMATION

Gene Name TGFB1

Official Symbol TGFB1

Synonyms Transforming growth factor beta-1, CEDLAP; DPD1; TGF beta1; TGFB; TGFB1; TGF-beta 1 protein; TGFbeta 1; TGF-beta 1; TGFbeta; TGF-beta-1; transforming growth factor beta-1;

Gene ID 7040

mRNA Refseq NM_000660.7

Protein Refseq NP_000651.3

MIM 190180

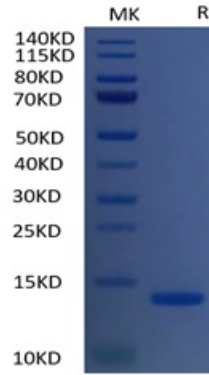
UniProt ID P01137

 Tel: 1-631-559-9269 1-516-512-3133

 Email: info@creative-biomart.com  Fax: 1-631-938-8127

 45-1 Ramsey Road, Shirley, NY 11967, USA

**Tris-Bis PAGE of
TGFB1-364H**



 Tel: 1-631-559-9269 1-516-512-3133

 Email: info@creative-biomart.com  Fax: 1-631-938-8127

 45-1 Ramsey Road, Shirley, NY 11967, USA