

Recombinant Human TGFB1 Protein(Leu30-Arg278(C33S)), His-Avi-tagged, Biotinylated

Cat. No. TGFB1-3755H Lot. No. (See product label)

SPECIFICATION

Product Overview	Biotinylated Recombinant Human TGFB1 Protein(Leu30-Arg278(C33S))(P01137) is expressed from HEK293 with His tag and Avi tag at the N-Terminus.
Species	Human
Source	HEK293
ProteinLength	Leu30-Arg278(C33S)
Conjugation/Label	Biotin
Form	Lyophilized from 0.22µm filtered solution in PBS (pH 7.4). Normally 8% trehalose is added as protectant before lyophilization.
Bio-activity	Immobilized Human ITGAV&ITGB6, His Tag at 1µg/ml (100µl/well) on the plate. Dose response curve for Biotinylated Human LAP (TGF beta 1) , His Tag with the EC50 of 0.86µg/ml determined by ELISA.
Molecular Mass	The protein has a predicted MW of 31.4 kDa. Due to glycosylation, the protein migrates to 45-50 kDa based on Tris-Bis PAGE result.
Endotoxin	Less than 1EU per µg by the LAL method.
Purity	> 95% as determined by Tris-Bis PAGE

 Tel: 1-631-559-9269 1-516-512-3133

 Email: info@creative-biomart.com  Fax: 1-631-938-8127

 45-1 Ramsey Road, Shirley, NY 11967, USA

Storage

-20 to -80°C for 12 months as supplied from date of receipt.
 -80°C for 3-6 months after reconstitution.
 2-8°C for 2-7 days after reconstitution.
 Recommend to aliquot the protein into smaller quantities for optimal storage. Please minimize freeze-thaw cycles.

Reconstitution

Centrifuge the tube before opening. Reconstituting to a concentration more than 100 µg/ml is recommended. Dissolve the lyophilized protein in distilled water.

Conjugation Biotin

GENE INFORMATION

Gene Name TGFB1 transforming growth factor, beta 1 [Homo sapiens]

Official Symbol TGFB1

Synonyms

TGFB1; transforming growth factor, beta 1; DPD1, TGFB; transforming growth factor beta-1; Camurati Engelmann disease; CED; TGFbeta; TGF-beta-1; TGF-beta 1 protein; latency-associated peptide; LAP; DPD1; TGFB;

Gene ID 7040

mRNA Refseq NM_000660

Protein Refseq NP_000651

MIM 190180

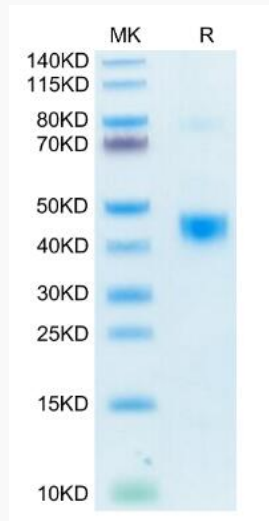
UniProt ID P01137

 Tel: 1-631-559-9269 1-516-512-3133

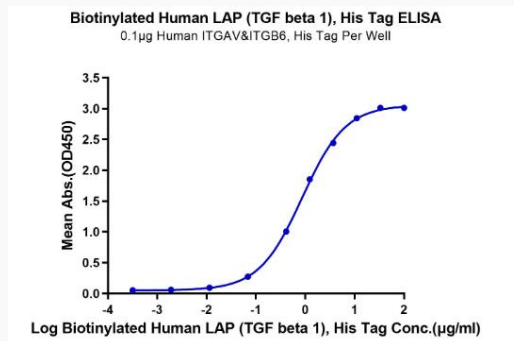
 Email: info@creative-biomart.com  Fax: 1-631-938-8127

 45-1 Ramsey Road, Shirley, NY 11967, USA

Tris-Bis PAGE



ELISA



 Tel: 1-631-559-9269 1-516-512-3133

 Email: info@creative-biomart.com  Fax: 1-631-938-8127

 45-1 Ramsey Road, Shirley, NY 11967, USA