

## Recombinant Human TGFB1 Protein(Leu30-Ser390 (C33S)), His-tagged

Cat. No. TGFB1-3847H Lot. No. (See product label)

### SPECIFICATION

<b>Product Overview</b>	Recombinant Human TGFB1 Protein(Leu30-Ser390 (C33S))(P01137) is expressed from HEK293 with His tag at the N-Terminus.
<b>Species</b>	Human
<b>Source</b>	HEK293
<b>ProteinLength</b>	Leu30-Ser390 (C33S)
<b>Form</b>	Lyophilized from 0.22µm filtered solution in PBS (pH 7.4). Normally 8% trehalose is added as protectant before lyophilization.
<b>Bio-activity</b>	Immobilized Human Latent TGF beta 1, His Tag at 2µg/ml (100µl/well) on the plate. Dose response curve for Biotinylated Human ITGAV&ITGB6, His Tag with the EC50 of 2.2µg/ml determined by ELISA.
<b>Molecular Mass</b>	The protein has a predicted MW of 44.2 kDa. Due to glycosylation, the protein migrates to 40-50 kDa (LAP) / 13-15 kDa (Mature TGF Beta 1) based on Tris-Bis PAGE result.
<b>Endotoxin</b>	Less than 1EU per µg by the LAL method.
<b>Purity</b>	> 95% as determined by Tris-Bis PAGE

 Tel: 1-631-559-9269 1-516-512-3133

 Email: [info@creative-biomart.com](mailto:info@creative-biomart.com)  Fax: 1-631-938-8127

 45-1 Ramsey Road, Shirley, NY 11967, USA

**Storage**

-20 to -80°C for 12 months as supplied from date of receipt.  
 -80°C for 3-6 months after reconstitution.  
 2-8°C for 2-7 days after reconstitution.  
 Recommend to aliquot the protein into smaller quantities for optimal storage. Please minimize freeze-thaw cycles.

**Reconstitution**

Centrifuge the tube before opening. Reconstituting to a concentration more than 100 µg/ml is recommended. Dissolve the lyophilized protein in distilled water.

## GENE INFORMATION

**Gene Name** [TGFB1 transforming growth factor, beta 1 \[ Homo sapiens \]](#)

**Official Symbol** [TGFB1](#)

**Synonyms** [TGFB1](#); transforming growth factor, beta 1; [DPD1](#), [TGFB](#); transforming growth factor beta-1; Camurati Engelmann disease; [CED](#); [TGFbeta](#); [TGF-beta-1](#); [TGF-beta 1 protein](#); latency-associated peptide; [LAP](#); [DPD1](#); [TGFB](#);

**Gene ID** [7040](#)

**mRNA Refseq** [NM\\_000660](#)

**Protein Refseq** [NP\\_000651](#)

**MIM** [190180](#)

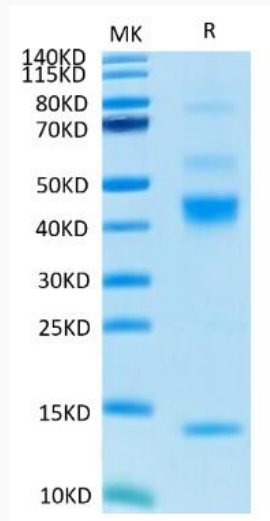
**UniProt ID** [P01137](#)

 Tel: 1-631-559-9269 1-516-512-3133

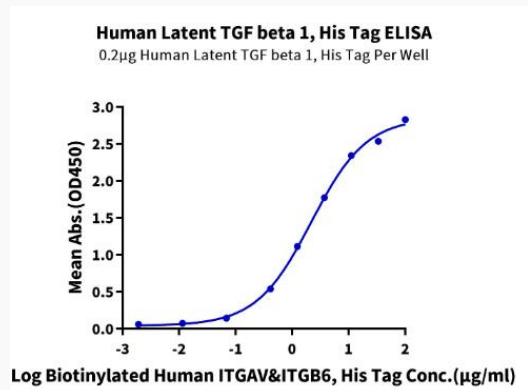
 Email: [info@creative-biomart.com](mailto:info@creative-biomart.com)  Fax: 1-631-938-8127

 45-1 Ramsey Road, Shirley, NY 11967, USA

**Tris-Bis PAGE**



**ELISA**



Tel: 1-631-559-9269 1-516-512-3133

Email: [info@creative-biomart.com](mailto:info@creative-biomart.com) Fax: 1-631-938-8127

45-1 Ramsey Road, Shirley, NY 11967, USA