

Recombinant Human TGFB1 Protein(Leu30-Ser390 (C33S)), His-Avi-tagged, Biotinylated

Cat. No. TGFB1-4129H Lot. No. (See product label)

SPECIFICATION

Product Overview	Biotinylated Recombinant Human TGFB1 Protein(Leu30-Ser390 (C33S))(P01137) is expressed from HEK293 with His tag and Avi tag at the N-Terminus.
Species	Human
Source	HEK293
ProteinLength	Leu30-Ser390 (C33S)
Conjugation/Label	Biotin
Form	Lyophilized from 0.22µm filtered solution in PBS (pH 7.4). Normally 8% trehalose is added as protectant before lyophilization.
Bio-activity	Immobilized Human ITGAV&ITGB6, His Tag at 1µg/ml (100µl/Well) on the plate. Dose response curve for Biotinylated Human Latent TGF beta 1, His Tag with the EC50 of 0.53µg/ml determined by ELISA.
Molecular Mass	The protein has a predicted MW of 44.2 kDa. Due to glycosylation, the protein migrates to 40-50 kDa (LAP) / 13-15 kDa (Mature TGF beta 1) based on Tris-Bis PAGE result.
Endotoxin	Less than 1EU per µg by the LAL method.

 Tel: 1-631-559-9269 1-516-512-3133

 Email: info@creative-biomart.com  Fax: 1-631-938-8127

 45-1 Ramsey Road, Shirley, NY 11967, USA

Purity	> 95% as determined by Tris-Bis PAGE > 93% as determined by HPLC
Storage	-20 to -80°C for 12 months as supplied from date of receipt. -80°C for 3-6 months after reconstitution. 2-8°C for 2-7 days after reconstitution. Recommend to aliquot the protein into smaller quantities for optimal storage. Please minimize freeze-thaw cycles.
Reconstitution	Centrifuge the tube before opening. Reconstituting to a concentration more than 100 µg/ml is recommended. Dissolve the lyophilized protein in distilled water.
Conjugation	Biotin

GENE INFORMATION

Gene Name	TGFB1 transforming growth factor, beta 1 [Homo sapiens]
Official Symbol	TGFB1
Synonyms	TGFB1; transforming growth factor, beta 1; DPD1, TGFB; transforming growth factor beta-1; Camurati Engelmann disease; CED; TGFbeta; TGF-beta-1; TGF-beta 1 protein; latency-associated peptide; LAP; DPD1; TGFB;
Gene ID	7040
mRNA Refseq	NM_000660
Protein Refseq	NP_000651
MIM	190180

 Tel: 1-631-559-9269 1-516-512-3133

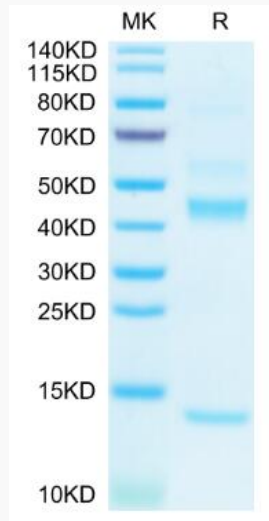
 Email: info@creative-biomart.com  Fax: 1-631-938-8127

 45-1 Ramsey Road, Shirley, NY 11967, USA

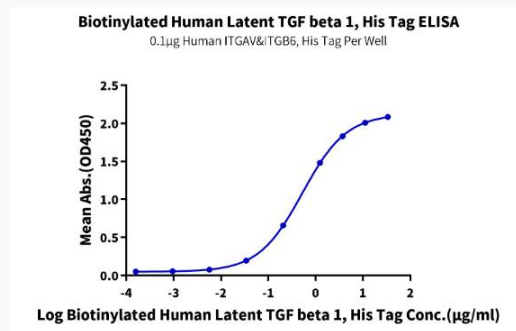
UniProt ID

P01137

Tris-Bis PAGE



ELISA



 Tel: 1-631-559-9269 1-516-512-3133

 Email: info@creative-biomart.com  Fax: 1-631-938-8127

 45-1 Ramsey Road, Shirley, NY 11967, USA